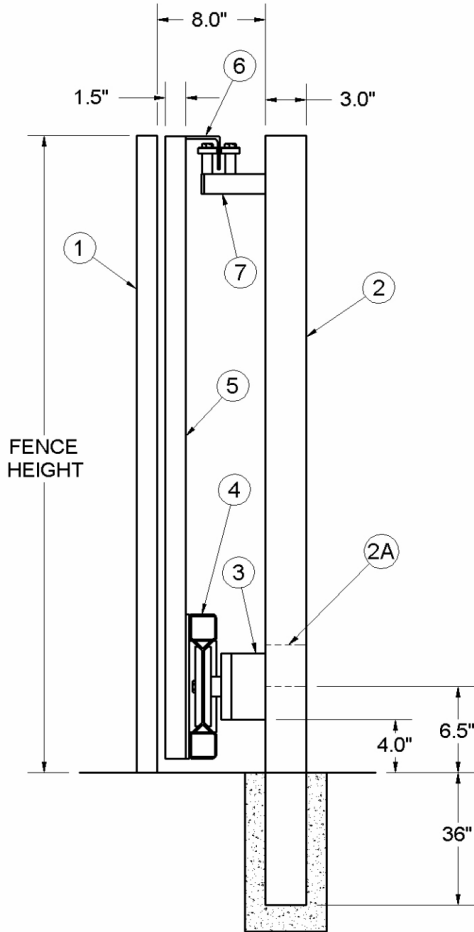
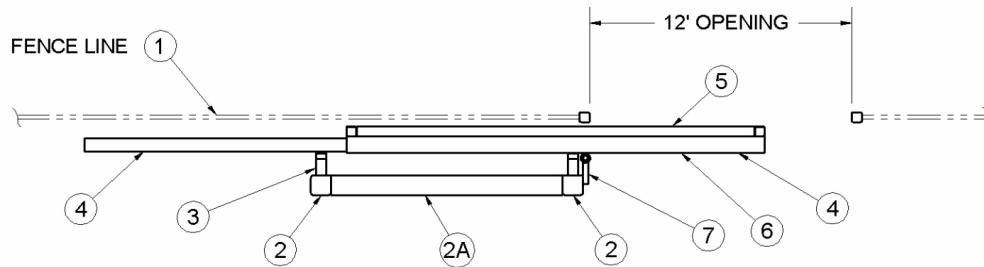


FULL CANTILEVER GATE SYSTEM-WELD/BOLT-ON RAIL



GATE SYSTEM SPECIFICATIONS:

- ① FENCE LINE
- ② 3 X 3 X 3/16 OR 4 X 4 X 3/16 POST
(1 POST AT FENCE HEIGHT)
(1 POST 24 INCH ABOVE GRADE)
- ②A CONNECT TWO POSTS WITH RAIL 6.5" UP FROM GRADE
(CAN BE USED FOR OPERATOR MOUNT)
- ③ CANTILEVER BRACKET WITH 2.5" EXTENSIONS
(2 TOTAL)
- ④ CANTILEVER RAIL EITHER WELDED OR BOLTED ON TO GATE FRAME
- ⑤ GATE FRAME
- ⑥ 2.5 X 2.5 X 3/16 CONTINUOUS ANGLE WELD TO GATE FOR GUIDE
- ⑦ COUNSEL GUIDE WELD TO GUIDE POST



SHUT IT GATE HARDWARE
PO Box 5464
TUCSON, AZ 85703

PHONE: 520-320-0680
FAX: 520-320-0681
EMAIL: SALES@SHUTITGATEHARDWARE.COM

