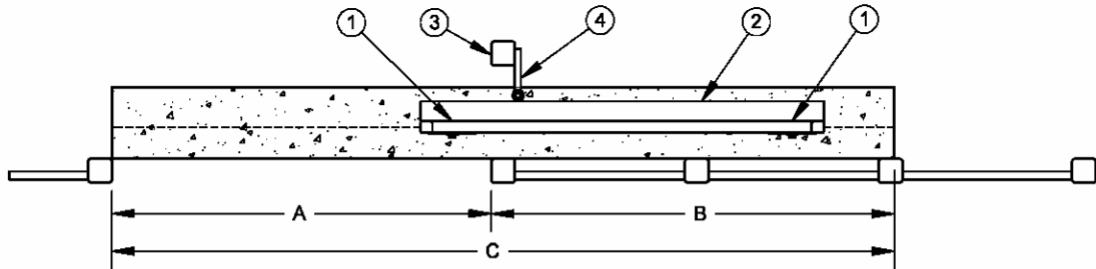


FULL THRESHOLD STYLE



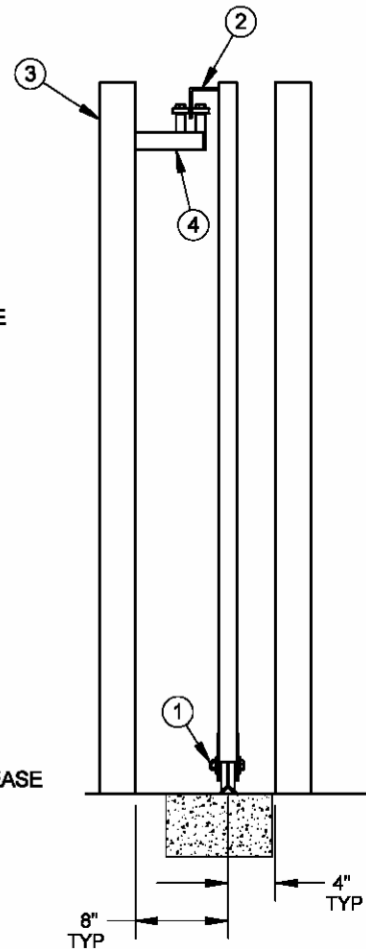
1. FULL CEMENT THRESHOLD: A 12" X 12" THRU OPENING  
B 8" X 8" BEHIND FENCE, ADJUST LENGTH FOR OPERATORS
2. SLOPE THRU C SHOULD NOT DEVIATE MORE THAN 1-1/2" VERTICALLY

**GATE SYSTEM SPECIFICATIONS:**

- ① TWO V GROOVE WHEELS IN BOTTOM RAIL
  - A. 4" FOR RESIDENTIAL, PART #CI2515, USE 1-1/2 X 3" BOTTOM RAIL
  - B. 6" FOR COMMERCIAL, PART #CI2720, USE 2 X 4" BOTTOM RAIL
- ② 2-1/2 X 2-1/2 X 3/16 CONTINUOUS ANGLE FULL LENGTH OF GATE  
HEIGHT LOCATION CAN VARY PER GATE DESIGN
- ③ GUIDE POST, MIN. 3" X 3" X .120 WALL
- ④ GUIDE ASSEMBLY, PART #CI2300

**NOTES:**

- \* MOST EFFICIENT SLIDE SYSTEM  
WEIGHT BALANCED DIRECTLY OVER TOP OF WHEELS  
ALLOWING MAXIMUM USE OF WHEEL'S EFFICIENCY
- \* GUIDE ASSEMBLY KEEPS GATE IN LINE WITH MINIMUM  
FRICTION AS SEALED BEARING WHEELS ALLOW CONTINUOUS  
SMOOTH MOVEMENT
- \* SEVERAL HUNDRED POUND GATES MOVE WITH FINGER TOUCH EASE



SHUT IT GATE HARDWARE  
PO Box 5464  
TUCSON, AZ 85703

PHONE: 520-320-0680  
FAX: 520-320-0681  
EMAIL: SALES@SHUTITGATEHARDWARE.COM

