

INVISIDECK™

Hidden SCRAIL® SYSTEM

Tool #F36 RHN33-38 DT

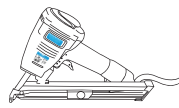
INSTALLATION INSTRUCTIONS

GETTING STARTED / INSTALLATION TIPS

IMPORTANT: Read all instructions carefully and completely to ensure proper installation.

WARNING: Parts have sharp points & edges. Use extreme caution when handling & installing. Wear safety glasses at all times.

Tools & Materials Needed



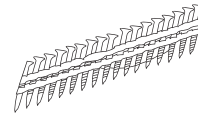
InvisiDeck™ Installation Gun



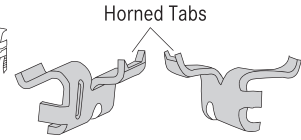
Safety Glasses



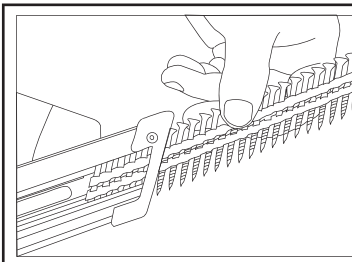
Compressed Air Supply



InvisiDeck™ SCRAIL® Fasteners



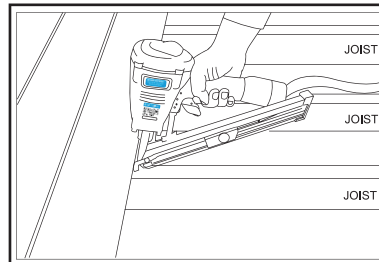
InvisiDeck™ I-CLP CLIP or TC-G (TC-150) CLIP



STEP 1

INSERT FASTENERS

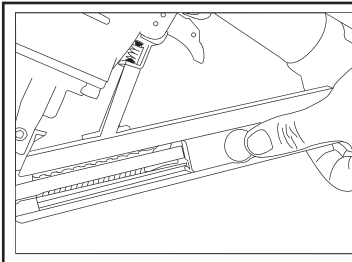
Insert a strip of **InvisiDeck™ SCRAIL®** fasteners into the rear of the magazine.



STEP 5

INSERT IN GROOVE

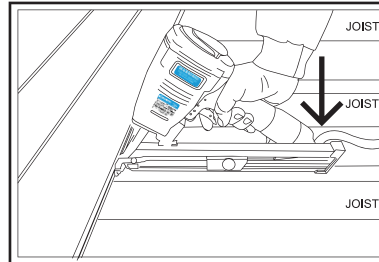
Holding the gun upright, insert the horned tab into the groove of the deck board directly over the support joist.



STEP 2

LOCK IN POSITION

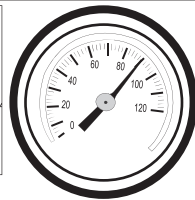
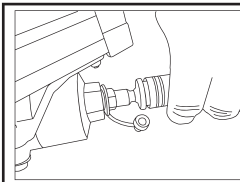
Pull back the spring coil until it locks onto the back of the sleeve.



STEP 6

POSITION / ANGLE

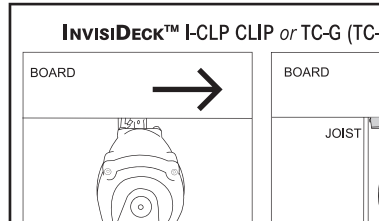
Once clip is fully inserted, apply pressure to disengage the safety. Then lower the back of the gun allowing the magazine to sit on the support joist to assure correct angle, and pull trigger.



STEP 3

AIR / PRESSURE

Attach air hose. Be sure line pressure is 80-100 PSI. (Adjust pressure to seat SCRAIL® completely in clip without deforming SCRAIL® head)

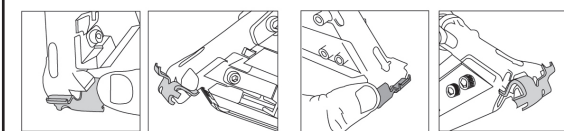


STEP 7

InvisiDeck™ I-CLP CLIP or TC-G (TC-150) CLIP

REMOVE

With the magazine still resting on the joist, slide the nose of the gun to the right or left (depending on the clip) removing it from the attached clip.



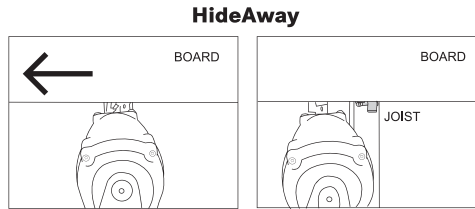
STEP 4

InvisiDeck™ I-CLP CLIP or TC-G (TC-150) CLIP

HideAway

MOUNT CLIP IN GUN

With horned tab points outward insert the opposite tab into the nose of the gun. ***Always remove finger from trigger when loading clip!**



HideAway

REPEAT UNTIL DECK IS COMPLETE!



FASCO AMERICA Inc.
 Free Toll number 800-239-8665
 sales@fascoamerica.com
 www.fascoamerica.com