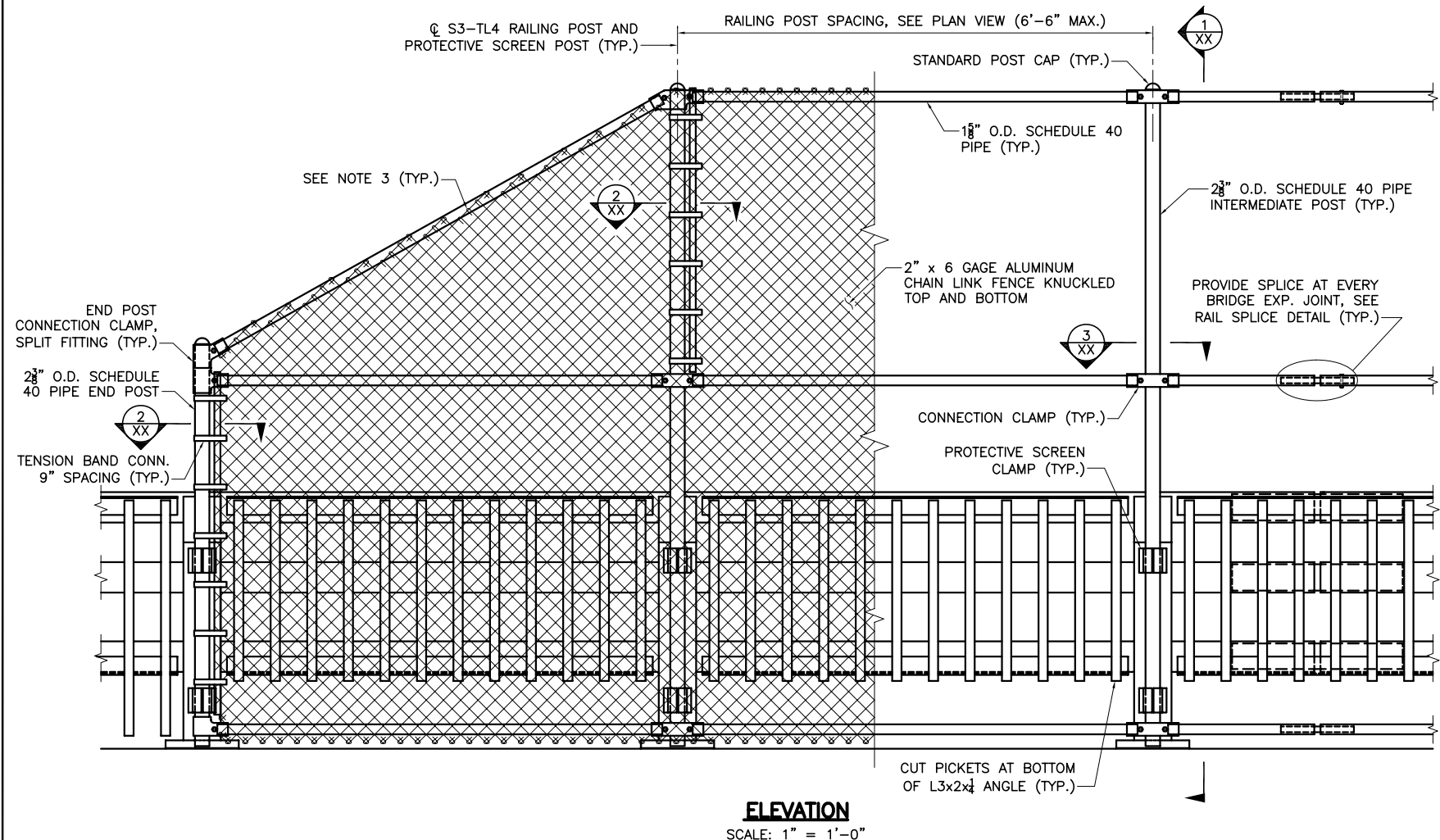
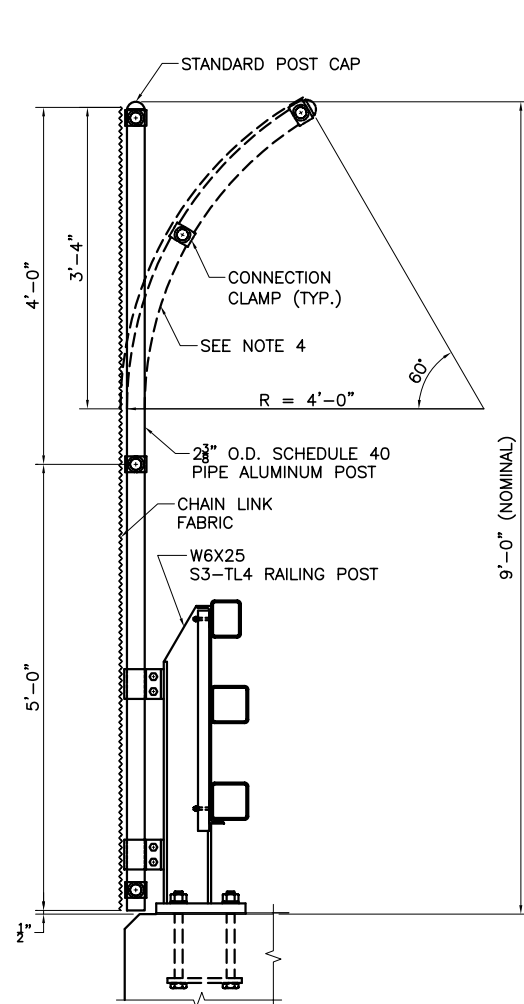


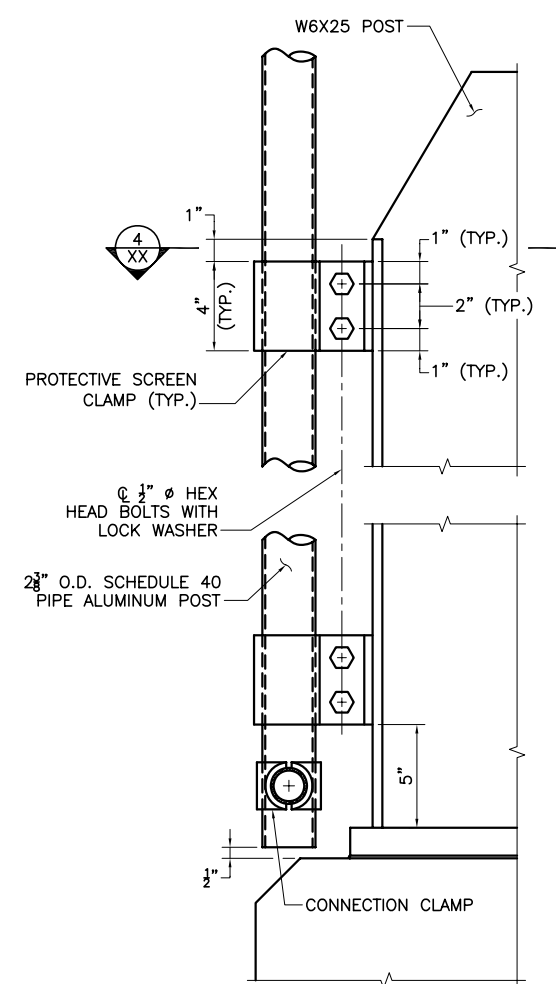
STATE	FED. AID PROJ. NO.	SHEET NO.	TOTAL SHEETS
MASS.	XXX-XXXX (XXX)	XX	XX
PROJECT FILE NO. XXXXXX			



ELEVATION
SCALE: 1" = 1'-0"



SECTION 1
SCALE: 1" = 1'-0"



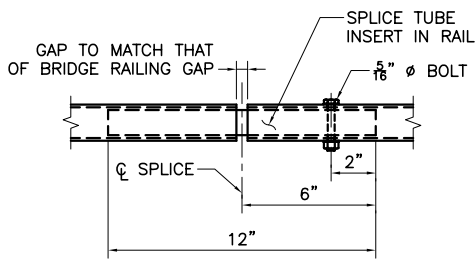
ELEVATION-PROTECTIVE SCREEN CLAMPS
SCALE: 3" = 1'-0"

GENERAL NOTES:

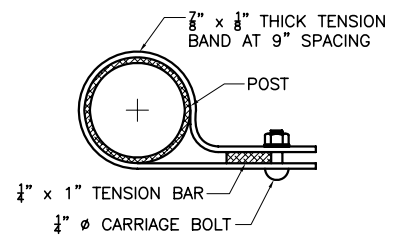
- USE 6 GAGE TIES AT 12" O.C. TO ALL POSTS AND TOP 2 RAILS OR 3 RAILS (CURVED TOP). SPACE TIES TO BOTTOM RAIL AT 6" O.C.
- ALL ALUMINUM, INCLUDING HARDWARE AND FABRIC, SHALL RECEIVE A 4±1 MIL POLYESTER POWDER COAT FINISH. THE COLOR SHALL MATCH THE COLOR OF THE S3-TL4 RAILING.
- THE CHAIN LINK FABRIC SHALL BE SECURED BY KNUCKLING TOGETHER THE CUT ENDS OF THE FABRIC WIRE IN A MANNER SIMILAR TO THE ORIGINALLY MANUFACTURED END.
- THE SCREEN TREATMENT TO BE USED (CURVED OR STRAIGHT TOP) IS SPECIFIED ELSEWHERE ON THE CONSTRUCTION DRAWINGS.
- PICKETS ARE REQUIRED FOR CRASH SAFETY.

MATERIALS:

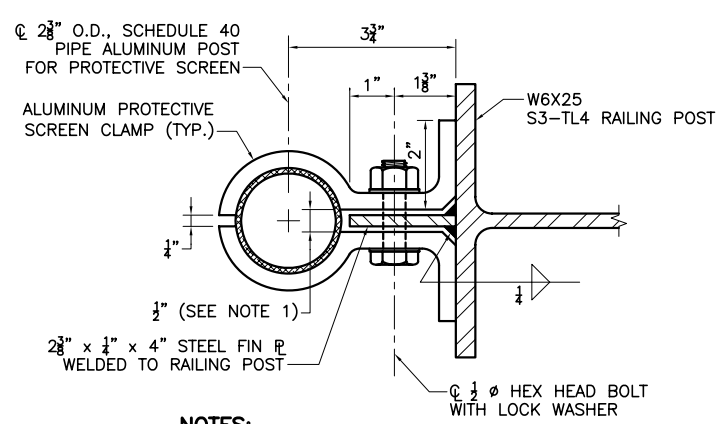
- POST AND RAILS _____ ASTM B 221, ALLOY 6061-T6, SCHEDULE 40 PIPE
- TENSION BARS, RAIL SPLICES, WASHERS, AND POST CONN. CLAMPS _____ ASTM B 221, ALLOY 6061-T6
- FABRIC AND TIES _____ AASHTO M 181 TYPE III, ALLOY 6061-T89 OR T94; 6 GAGE
- TENSION BANDS _____ ASTM B 221, ALLOY 6063-T5
- BOLTS _____ ASTM B 316, ALLOY 2024-T4
- NUTS _____ ASTM B 316, ALLOY 6061-T6
- PROTECTIVE SCREEN CLAMPS _____ ASTM B 221, ALLOY 6061-T6



RAIL SPLICE
SCALE: 3" = 1'-0"

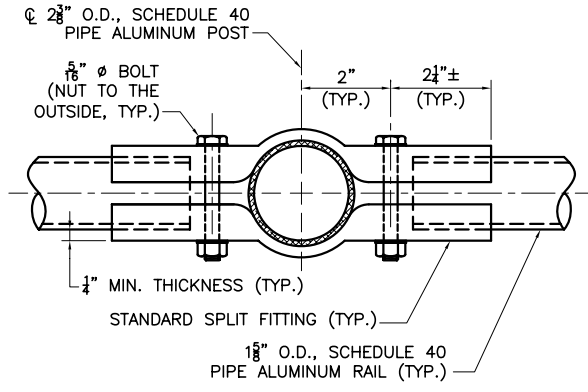


SECTION 2 TENSION BAND CONNECTION
SCALE: 6" = 1'-0"



- NOTES:**
- DRAW FOR FABRICATION TO ENSURE CLAMPING ACTION.
 - SLIGHT VARIATIONS IN EXTRUSION DIMENSIONS MAY BE SUBMITTED FOR APPROVAL.

SECTION 3
SCALE: 6" = 1'-0"



SECTION 4 POST CONNECTION CLAMP
SCALE: 6" = 1'-0"

PROTECTIVE SCREEN TYPE I

MONTH DD, YYYY	ISSUED FOR CONSTRUCTION
DATE	DESCRIPTION
USE ONLY PRINTS OF LATEST DATE	