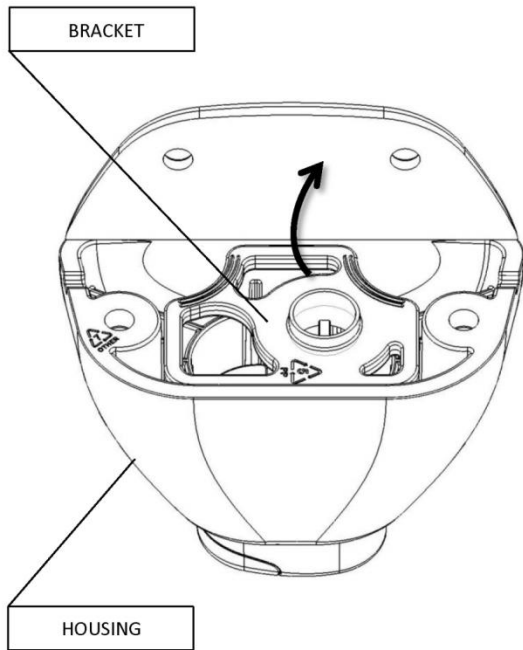


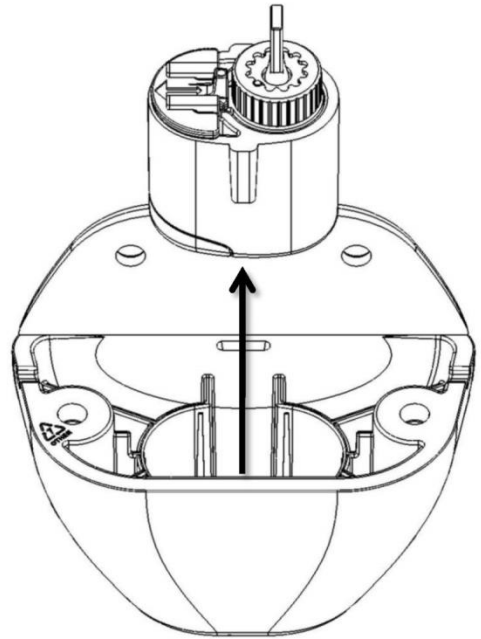
Lokk-Latch Deluxe Re-keying Assembly  
External Access Kit (EAK)

**TO DISASSEMBLE**

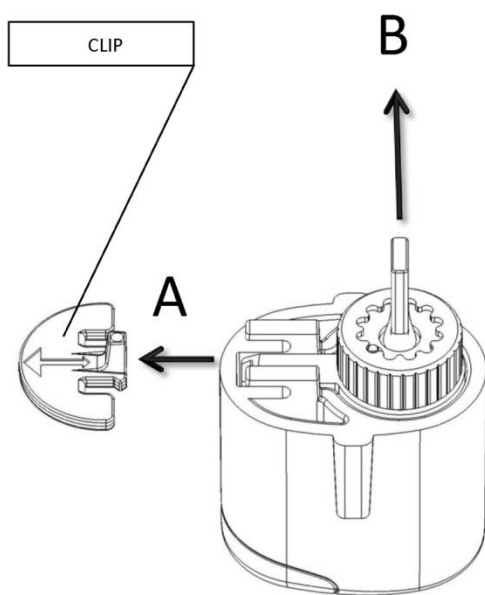
Step 1: Remove bracket plate from housing using finger to rotate piece out.



Step 2: Remove push button assembly.

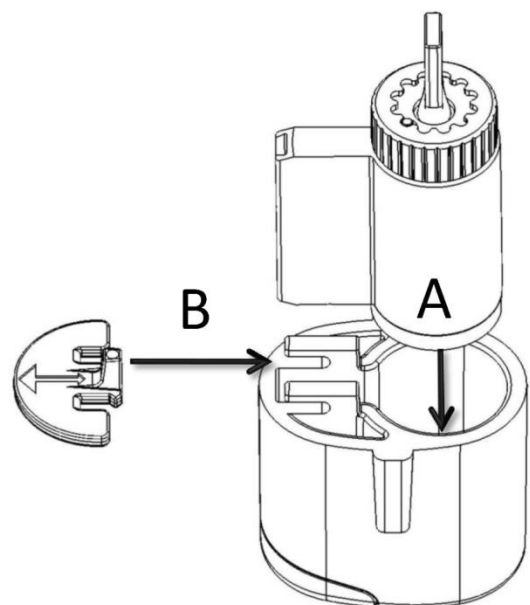


Step 3: **A.** Remove clip. **B.** Remove Lock Cylinder

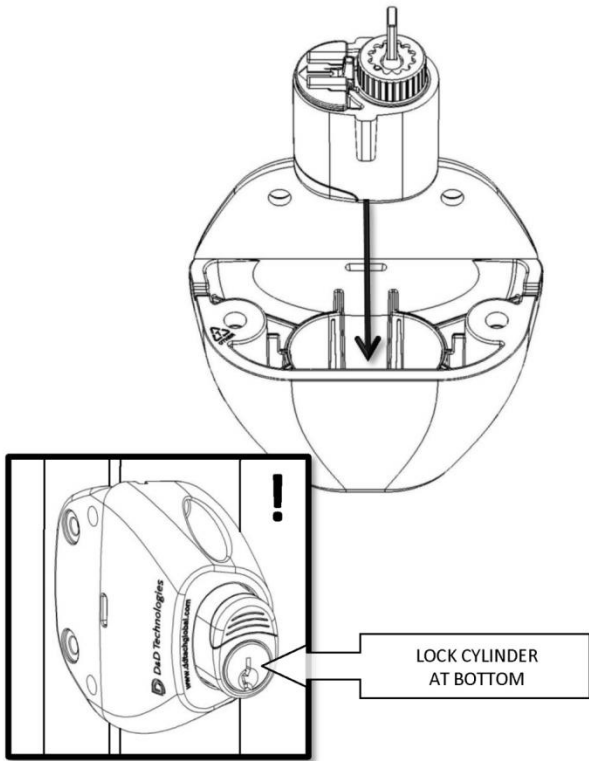


**TO ASSEMBLE**

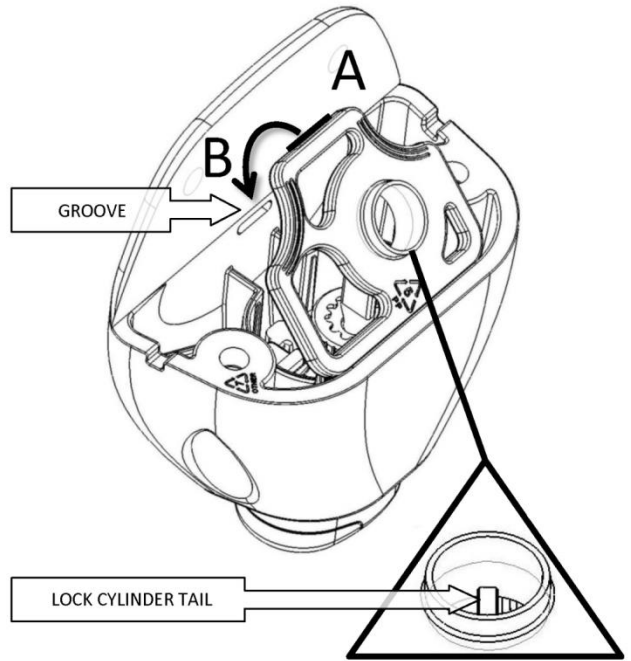
Step 1 : **A.** Insert lock cylinder into push button  
**B.** Push clip under guiding rails all the way towards lock



Step 2 : Insert push button assembly into housing cavity. Make sure Lock Cylinder is at the bottom of the push button when installing onto fence post (!)



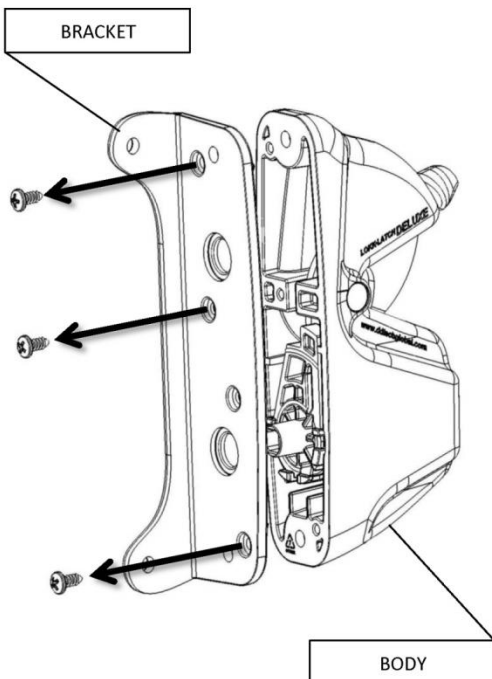
Step 3 : **A.** Position bracket plate with the hole directly over the Lock Cylinder Tail as shown. **B.** Push down and snap bracket plate into groove.



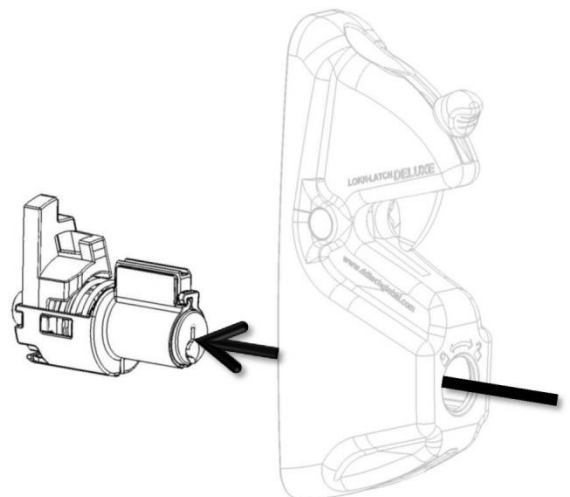
Lokk-Latch Deluxe Re-keying Assembly  
Latch Body

**TO DISASSEMBLE**

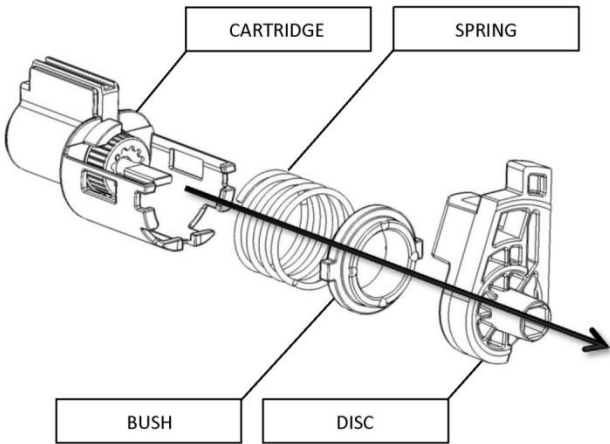
Step 1 : Unscrew three Philips head screws and remove mounting bracket



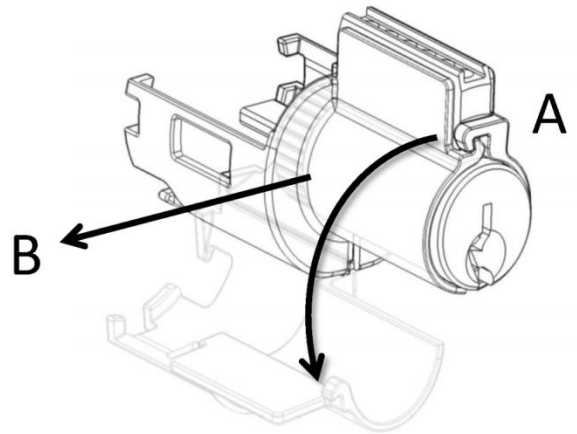
Step 2 : Remove lock cartridge assembly by pushing face of Lock Cylinder through Body



Step 3 : Remove Disc, Bush, and Spring from Lock Cartridge assembly.

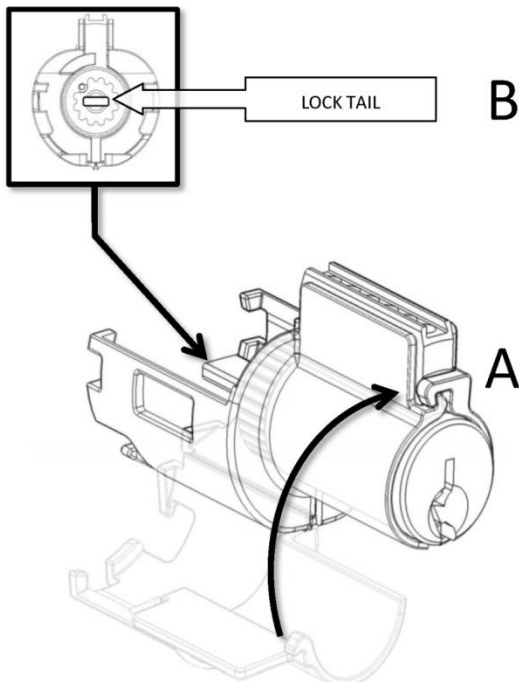


Step 4 : A. Un-clip the hook on the Lock Cartridge and open as shown  
B. Remove Lock Cylinder

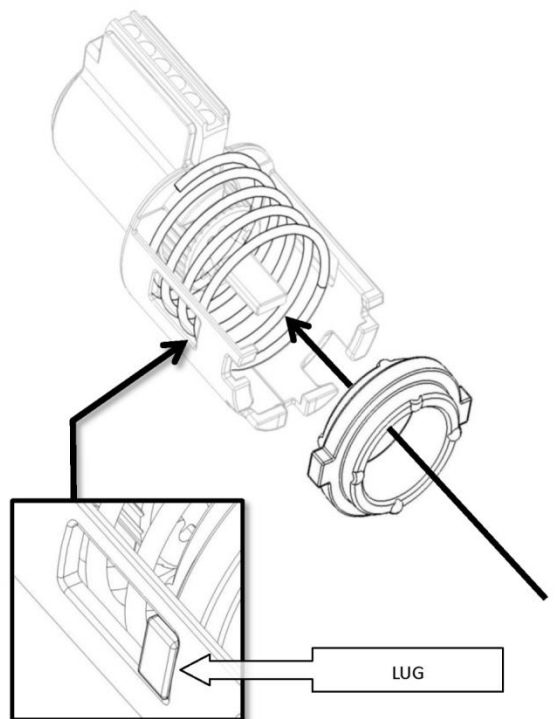


**TO ASSEMBLE**

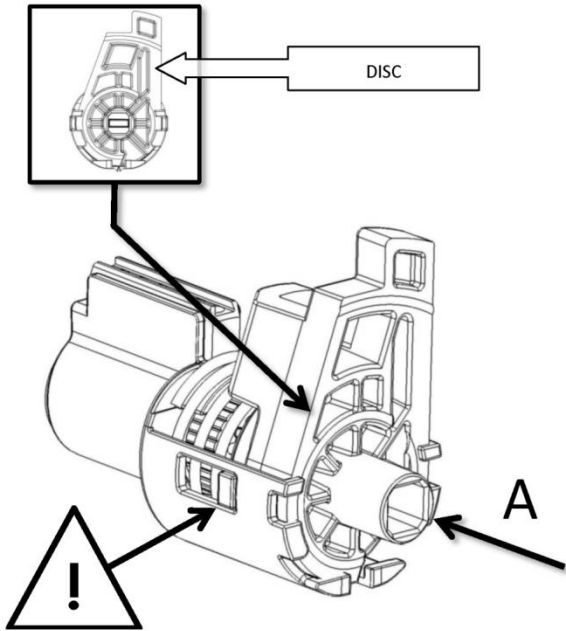
Step 1 A. Insert Lock Cylinder back into Lock Cartridge and re-hook the clip.  
B. Lock Tail should be horizontal as shown



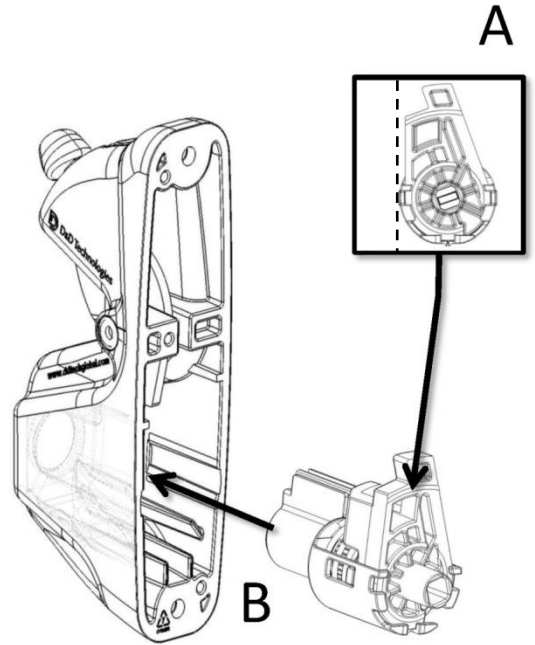
Step 2 : Install Spring and Bush into cartridge. Squeeze the sides of Lock Cartridge making sure both Lugs of the Bush fit as shown



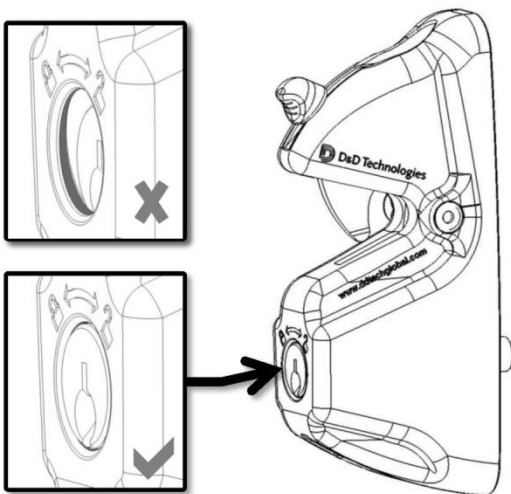
Step 3 : **A.** Insert Disc making sure Lock Tail slides into the slot in the center of the Disc.  
(!) -Double check the Bush to ensure both Lugs are still inside the slots on the Lock Cartridge



Step 4 : **A.** Make sure the Disc is turned so that it leans up against the left hand side of the housing.  
**B.** Push Lock Cartridge assembly back into housing using the internal guides.



Step 5 : Check that the face of the Lock Cylinder is flush with outer body and not at an angle



Step 6 : Re-determine the proper handing of the bracket and reinsert the three screws as shown.  
DO NOT insert a screw into the hole that is located second up from the bottom (X).

