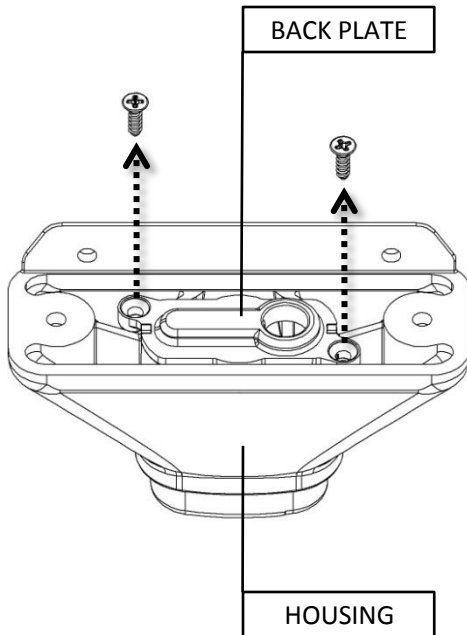
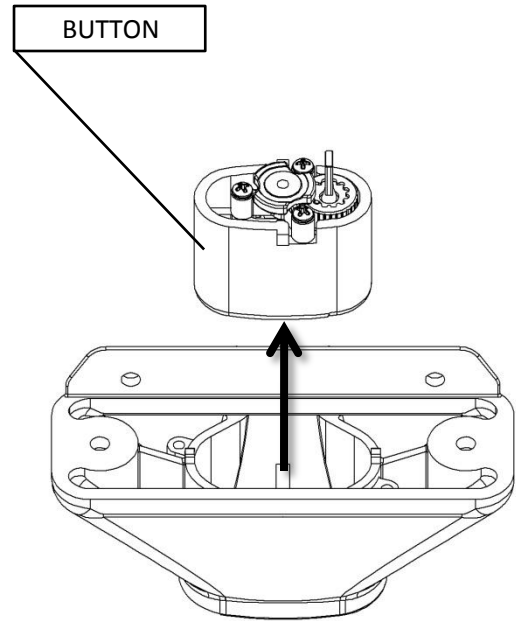


TO DISASSEMBLE

Step 1: Unscrew two Philips head screws and remove Back Plate from Housing.



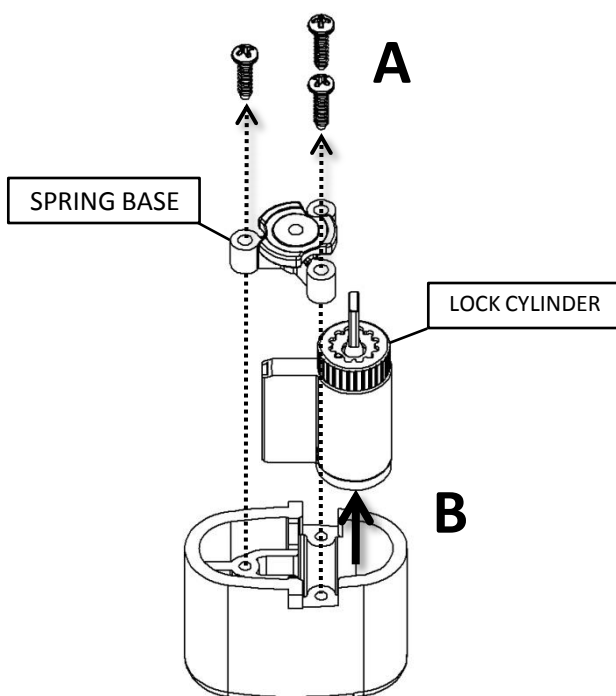
Step 2: Remove Button from Housing.



Step 3:

A. Unscrew three Philips head screws and remove Spring Base from Button.

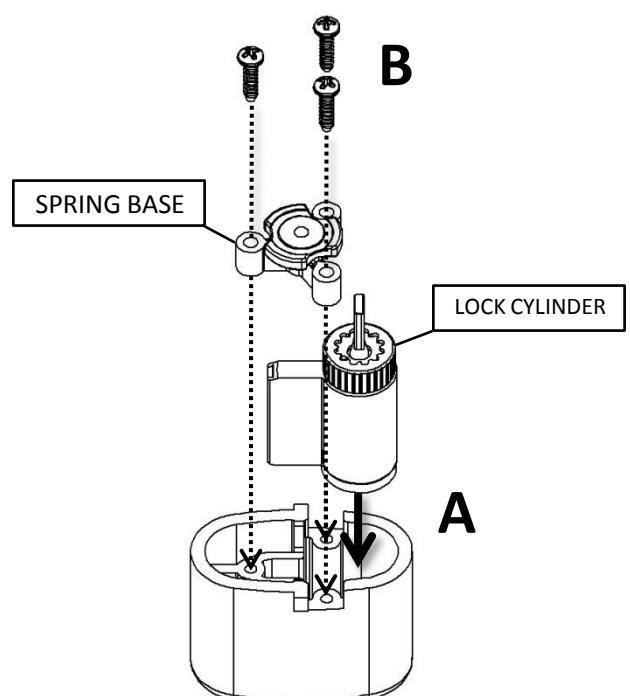
B. Remove Lock Cylinder.



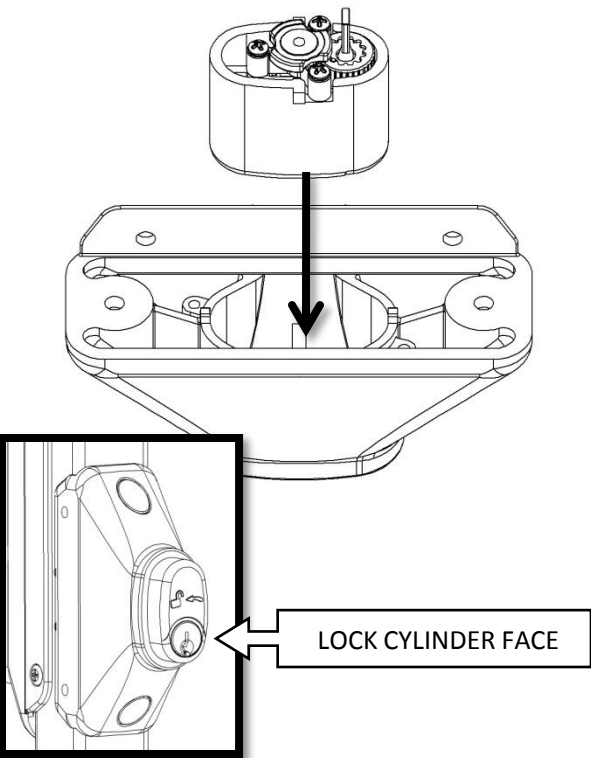
TO ASSEMBLE

Step 1: **A.** Insert Lock Cylinder into Button.

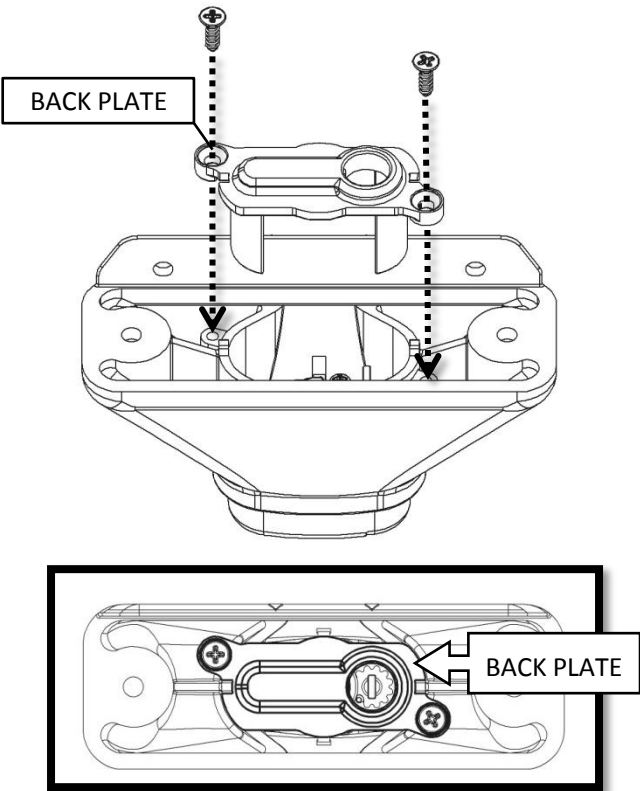
B. Screw three Philips head screws through Spring Base and into Button.



Step 2: Insert Button into Housing, checking that Lock Cylinder Face will be at the bottom when mounted on post.



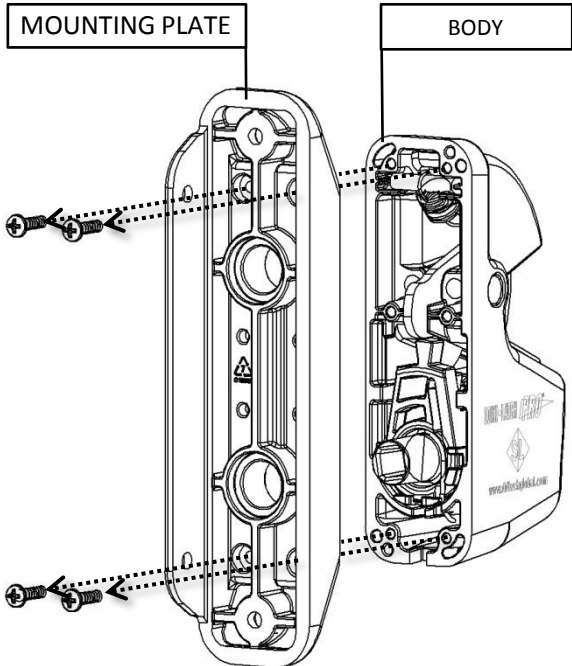
Step 3: Using two Philips head screws, screw Back Plate into Housing as shown.



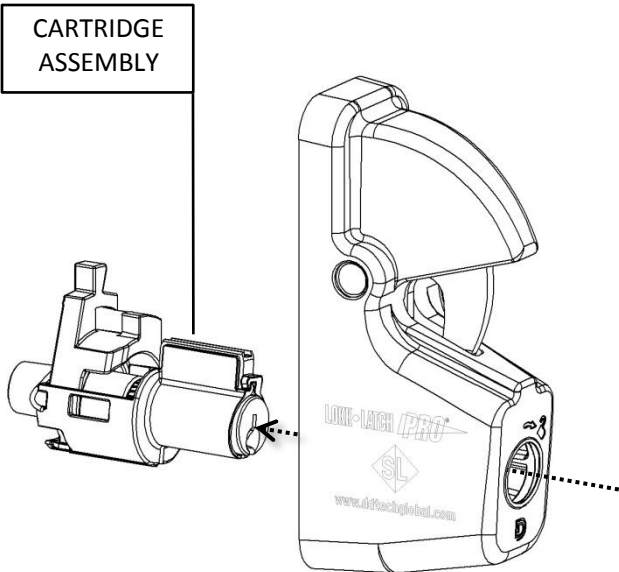
Lokk-Latch LLP SL Re-keying Assembly
Latch (LLP SL)

TO DISASSEMBLE

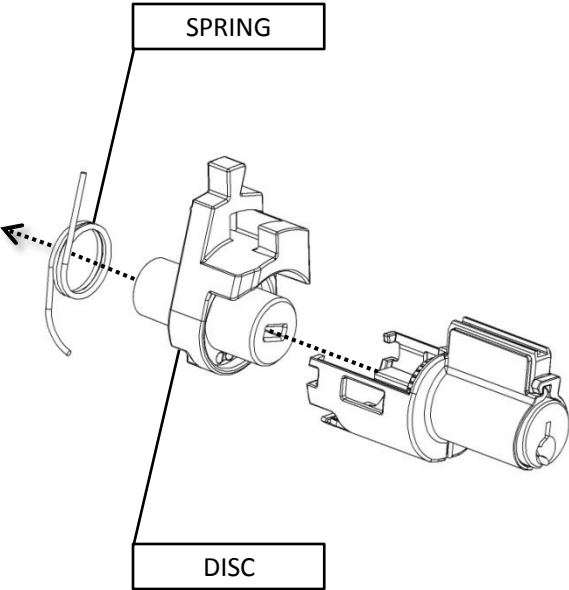
Step 1: Unscrew four Philips head screws and remove Mounting Plate from Body.



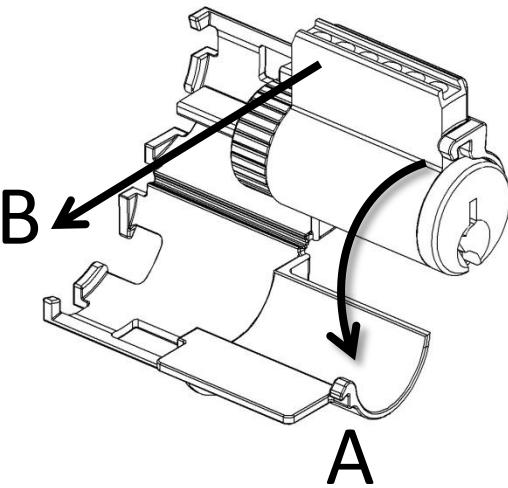
Step 2: **A.** Remove Cartridge Assembly by pushing face of Lock Cylinder through Body.



Step 3: Remove Disc and Spring from Lock Cartridge assembly.

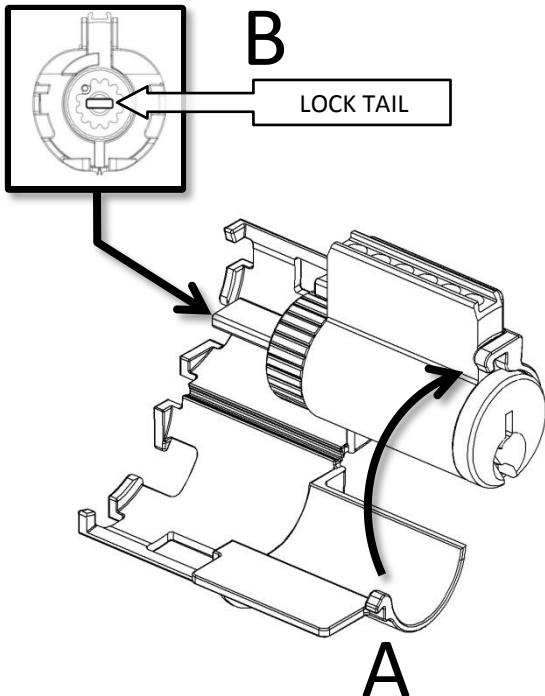


Step 4: **A.** Un-clip the hook on the Lock Cartridge and open as shown.
B. Remove Lock Cylinder.

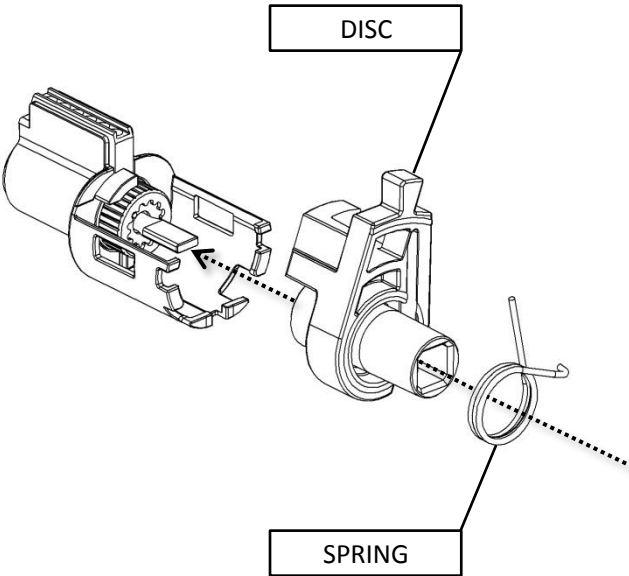


TO ASSEMBLE

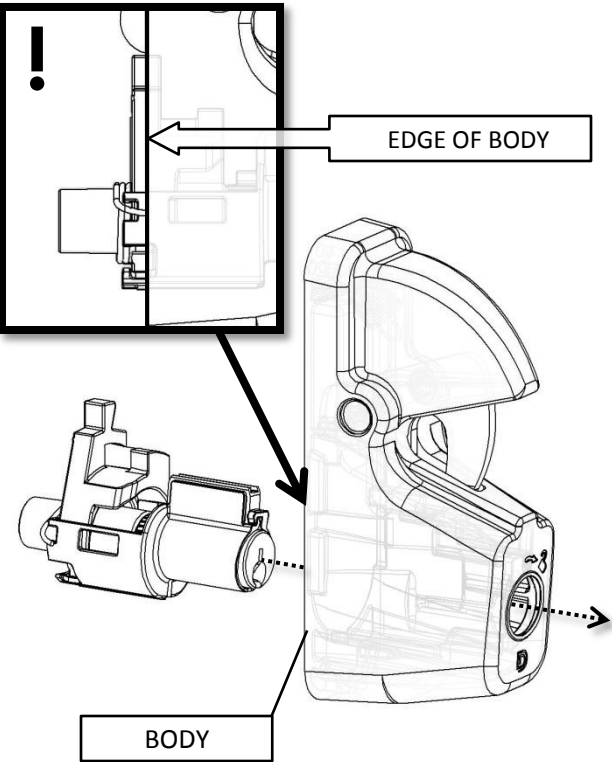
Step 1: **A.** Insert Lock Cylinder back into Lock Cartridge and re-hook the clip.
B. Lock Tail should be horizontal as shown.



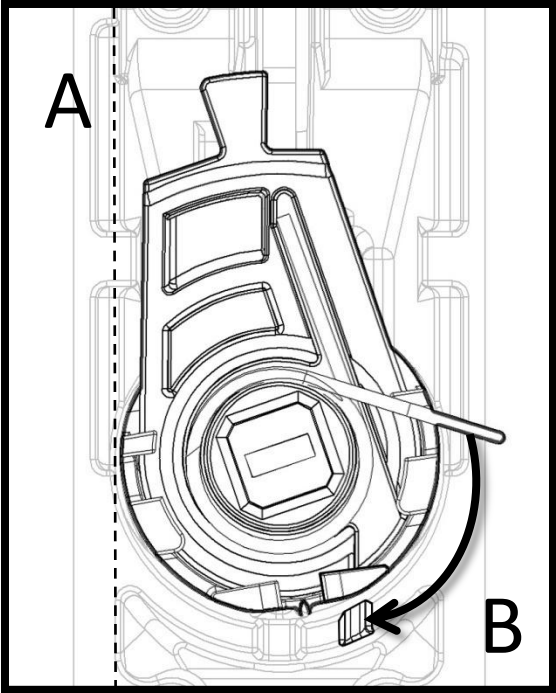
Step 2: Install Spring and Disc into cartridge.



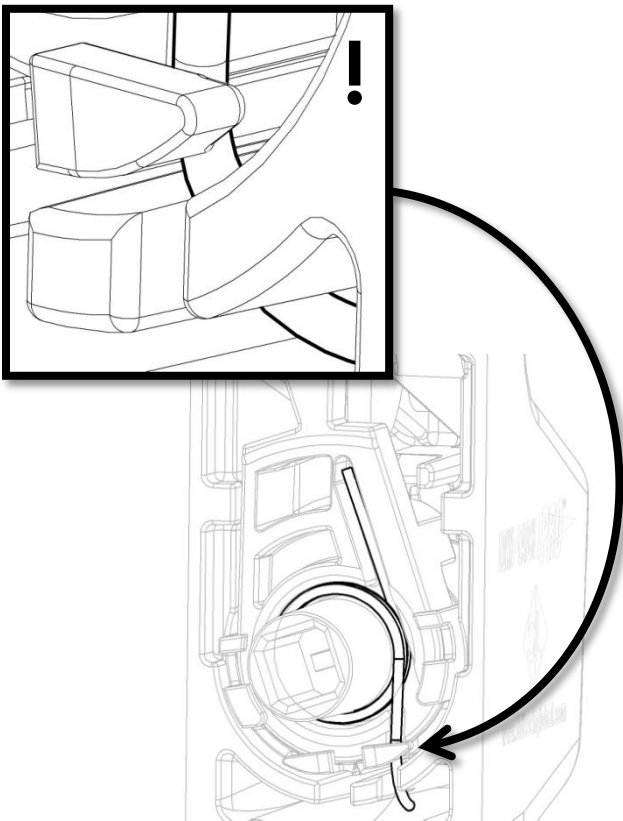
Step 3: Insert Lock Cartridge assembly partly into Body until position as shown (!)



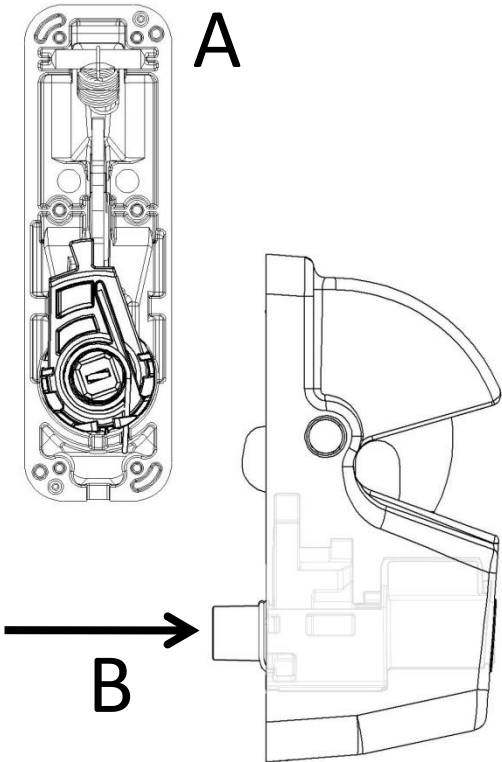
Step 4:
A. Align the Disc with the left side of the Body.
B. Bend the Spring end down and into slot, whilst holding the Disc in its position.



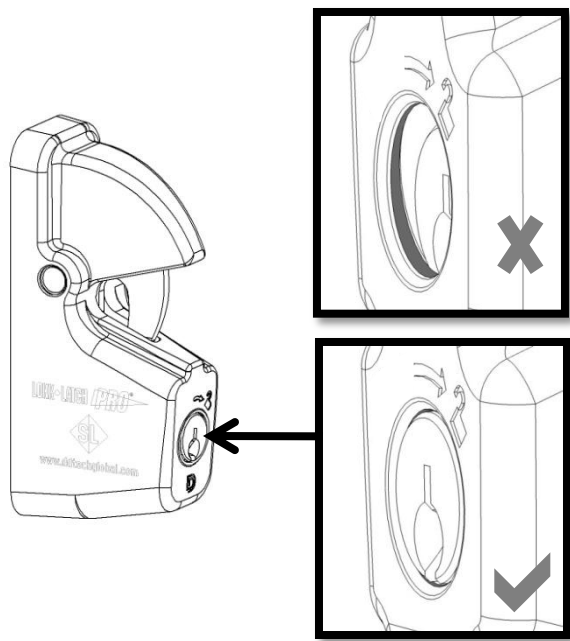
Step 5. Check that Spring is as shown (!)



Step 6: **A.** Check Disc alignment.
B. Push Cartridge Assembly fully into Body.



Step 7: Check that the face of the Lock Cylinder is flush with outer Body and not at an angle.



Step 8: Screw Mounting Plate to Body with four Philips head screws through holes as shown.

