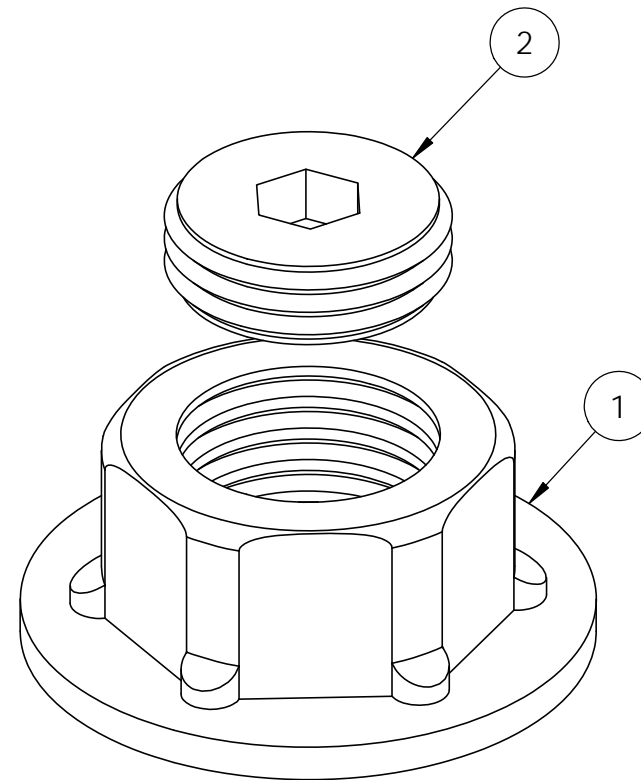
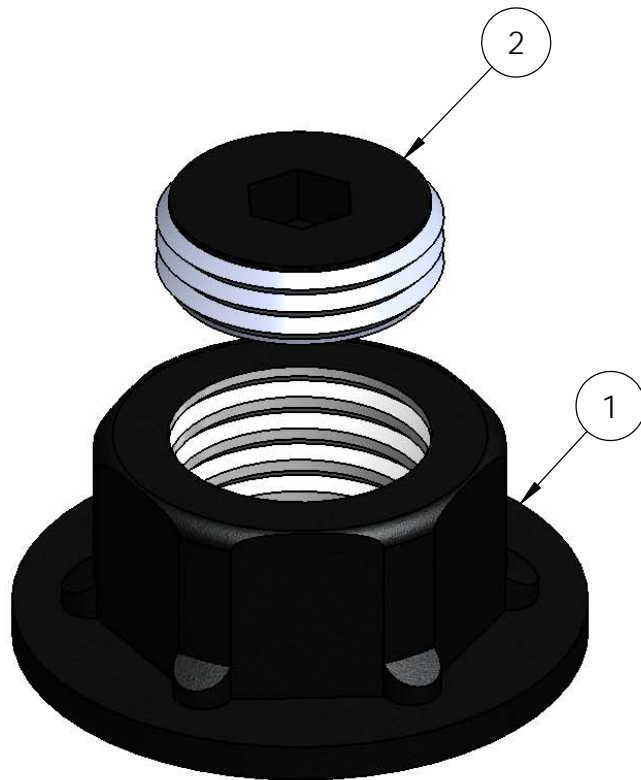


Product & Packaging Specs

1 1/2" Hex Cap Nut

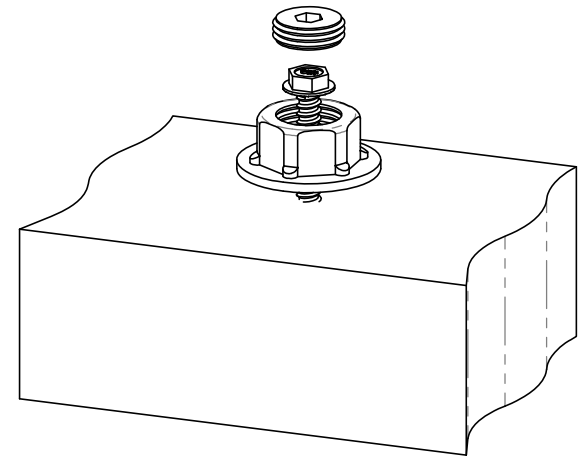
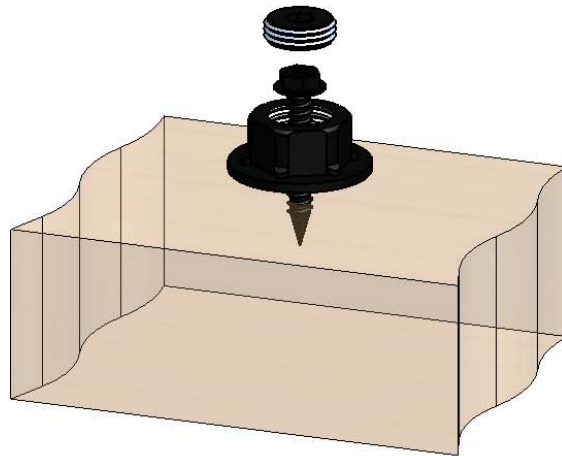
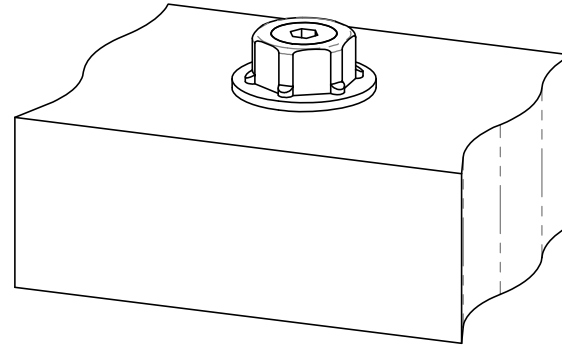
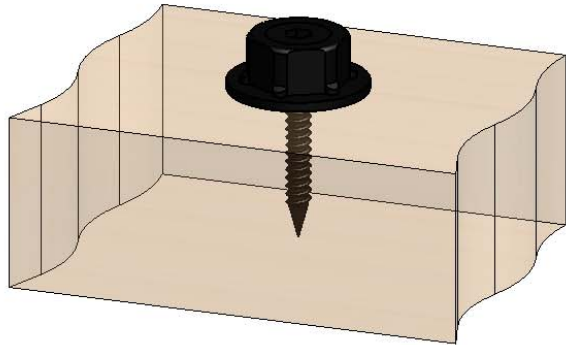
Item #: 56621

ITEM NO.	QTY.	PART NUMBER	DESCRIPTION
1	1	56621-11	1 1/2" Hex Cap Nut
2	1	56621-12	1 1/2" Hex Cap Nut Plug



Weight: 0.04 LBS
 Scale: 1:1
 Last updated: 7/13/2015

56621-10



Weight: LBS
Scale: 1:2
Last updated: 7/13/2015

56621-10

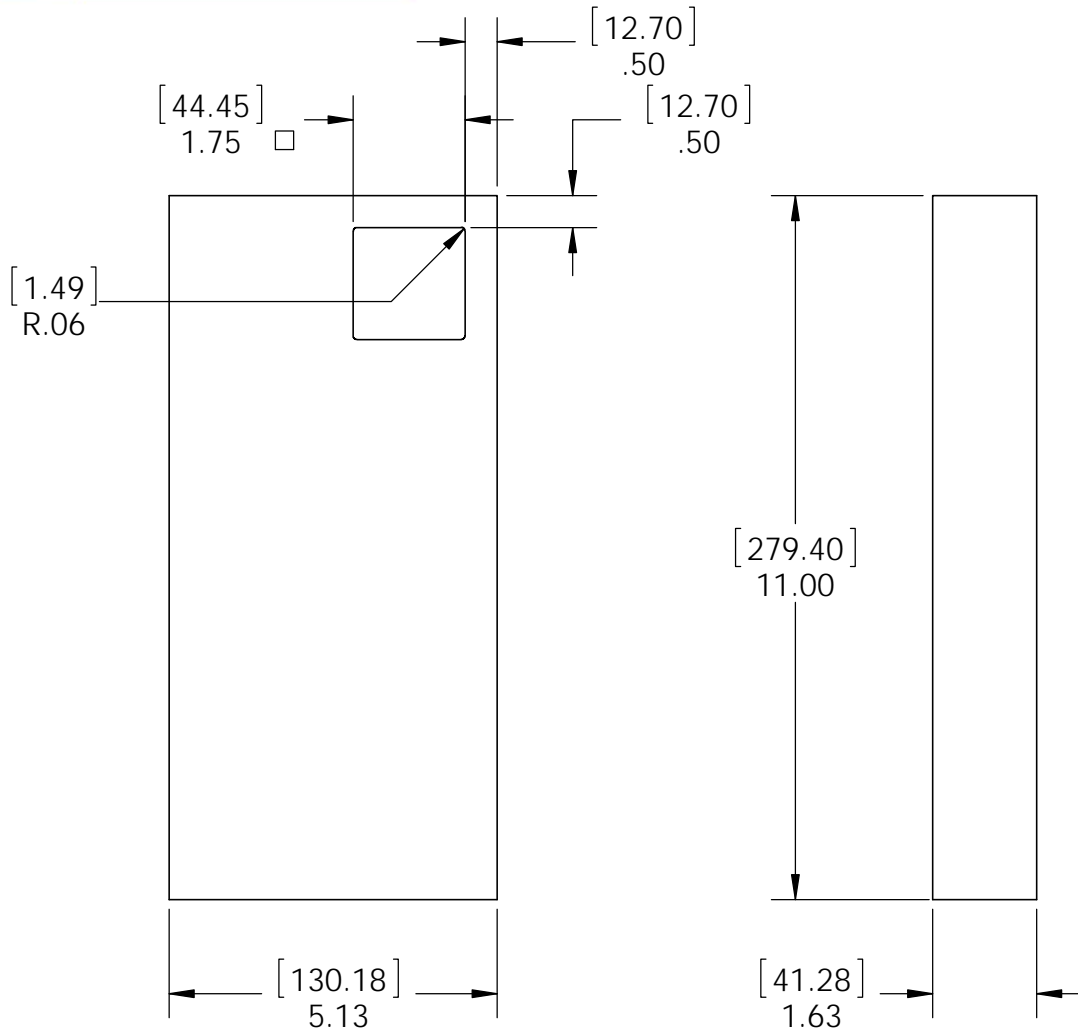


OZCO BUILDING PRODUCTS

Product & Packaging Specs

Box, Hex Cap Nut

Item #: Box, 56621



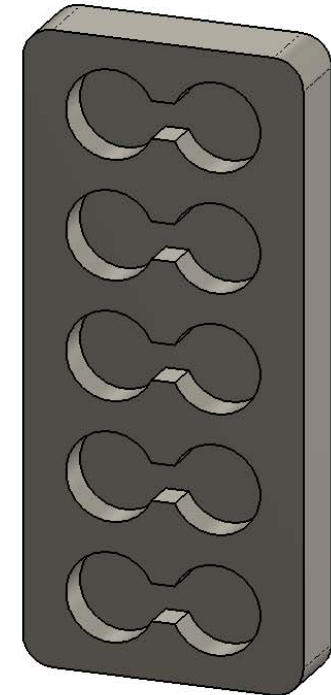
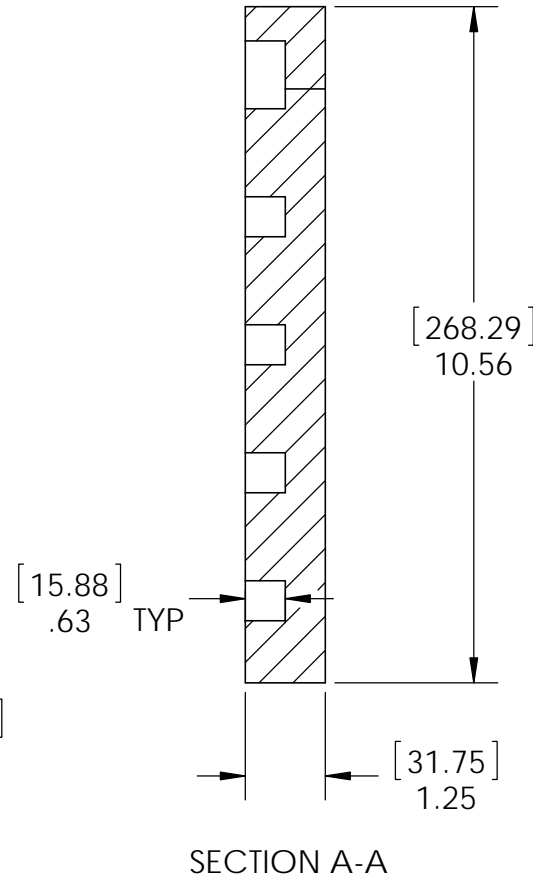
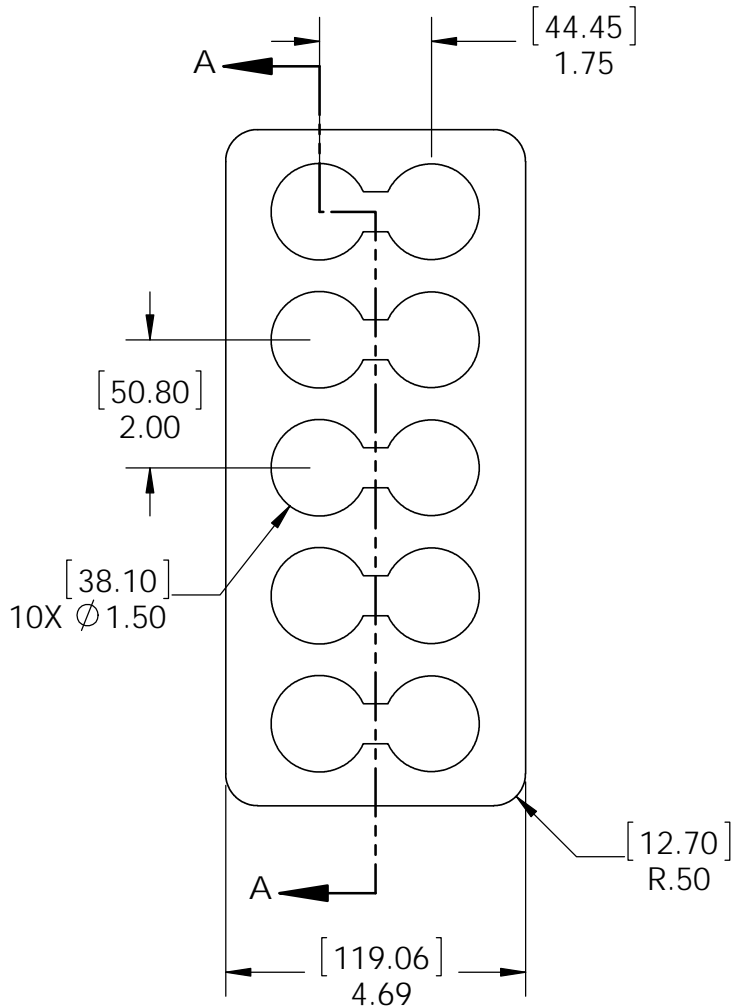
Material: Corrugated Paper
 Finish: See artwork
 Weight: 0.04 LBS
 Scale: 1:3
 Last updated: 7/13/2015

56621-10

Product & Packaging Specs

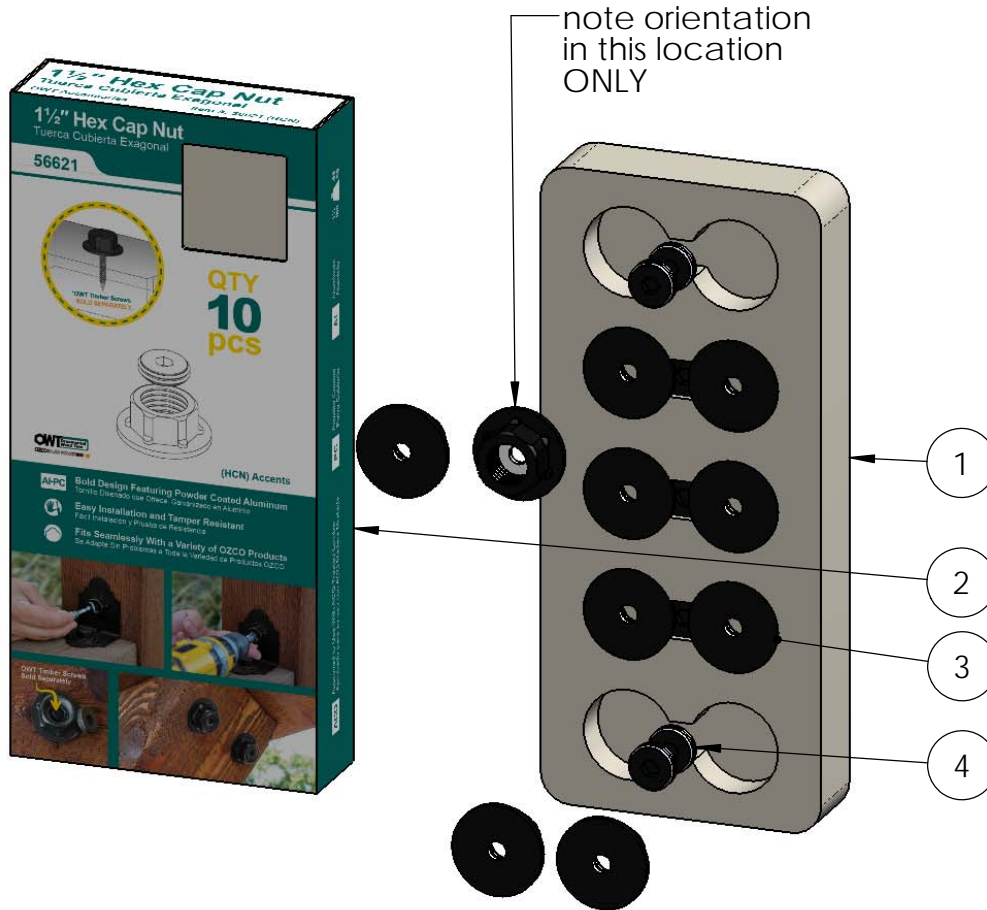
Insert, Hex Cap Nut Box

Item #: 56621 HCN Box Insert



Material: Polyurethane Foam Rigid
 Finish: Natural
 Weight: 0.29 LBS
 Scale: 1:3
 Last updated: 7/13/2015

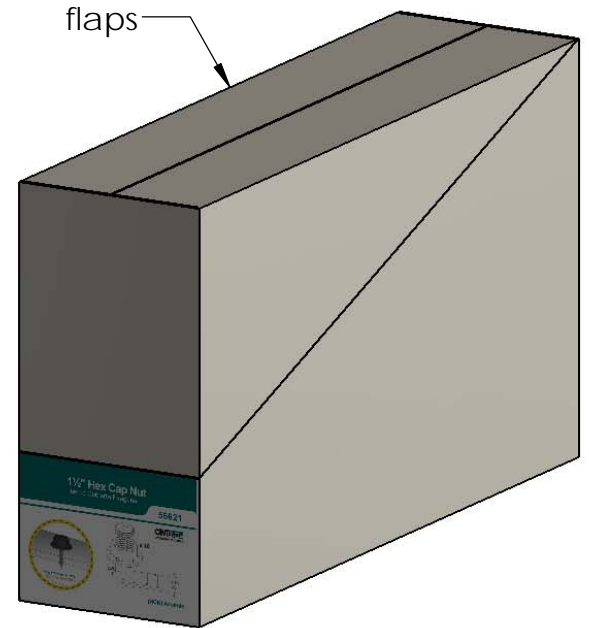
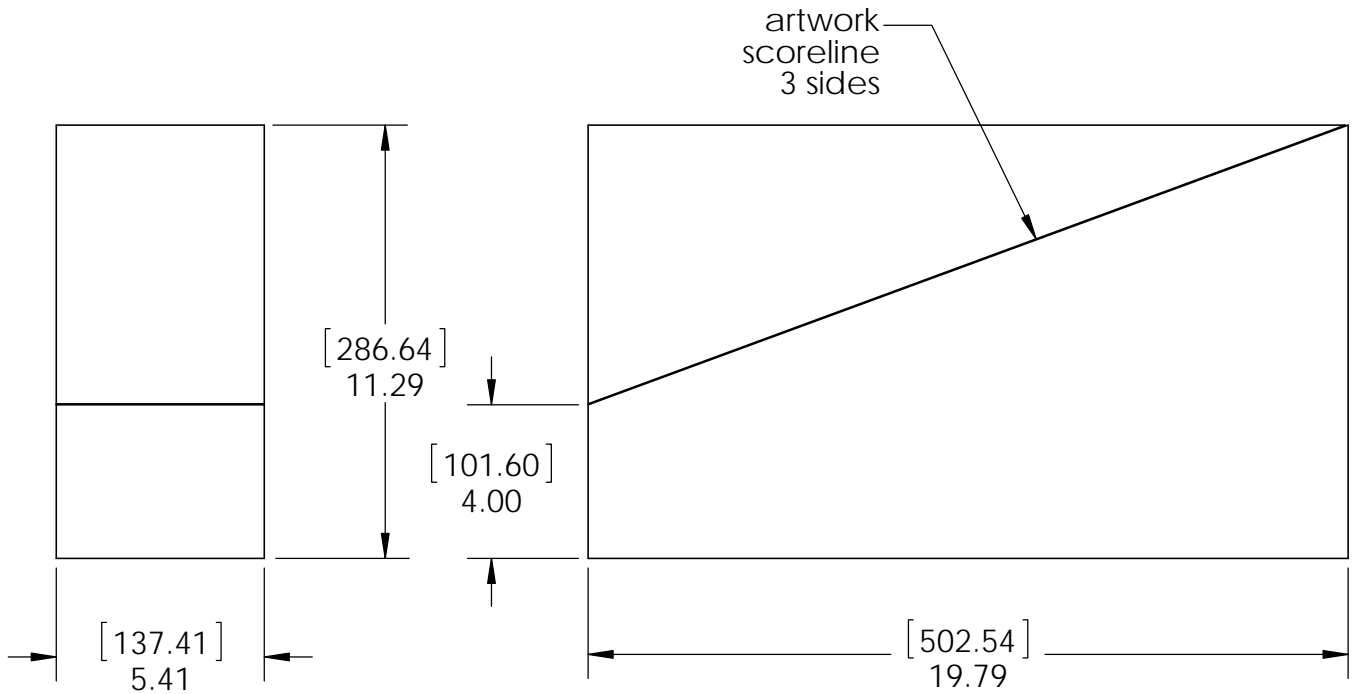
56621-10



ITEM NO.	QTY.	PART NUMBER	DESCRIPTION
1	1	56621 Hex Cap Nut Box Insert	Insert, Hex Cap Nut Box
2	1	Box, 56621	Box, Hex Cap Nut
3	10	56621-11	1 1/2" Hex Cap Nut
4	10	56621-12	1 1/2" Hex Cap Nut Plug

Weight: 0.80 LBS
 Scale: 1:3
 Last updated: 7/13/2015

56621-10



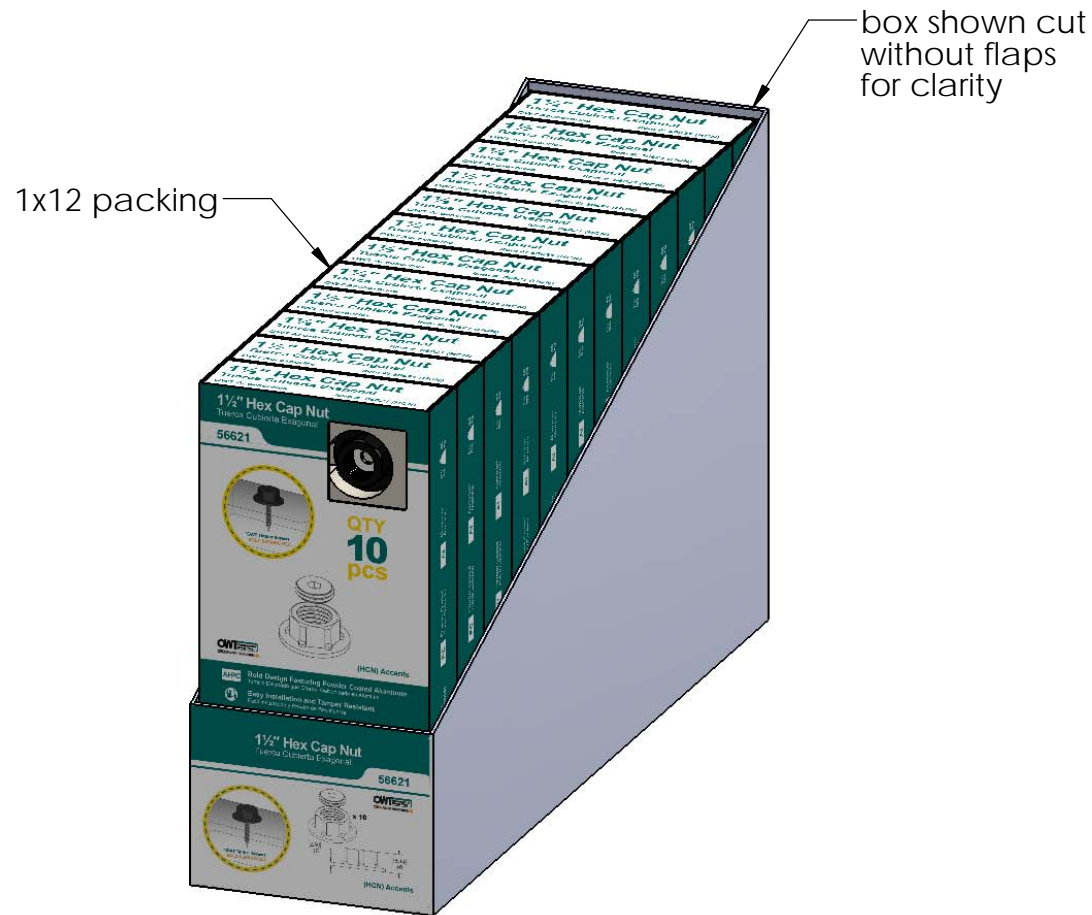
Material: Corrugated Paper
 Finish: See artwork
 Weight: 0.30 LBS
 Scale: 1:5
 Last updated: 7/13/2015

56621-10

Product & Packaging Specs

56621 Packing

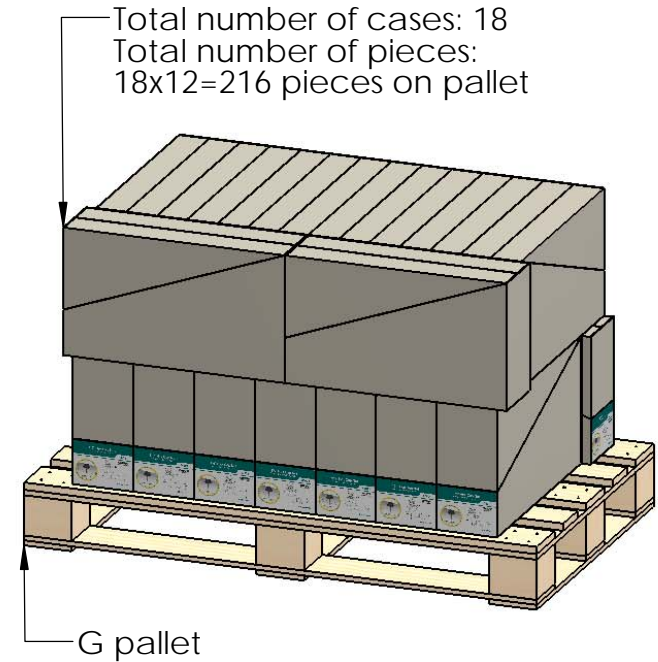
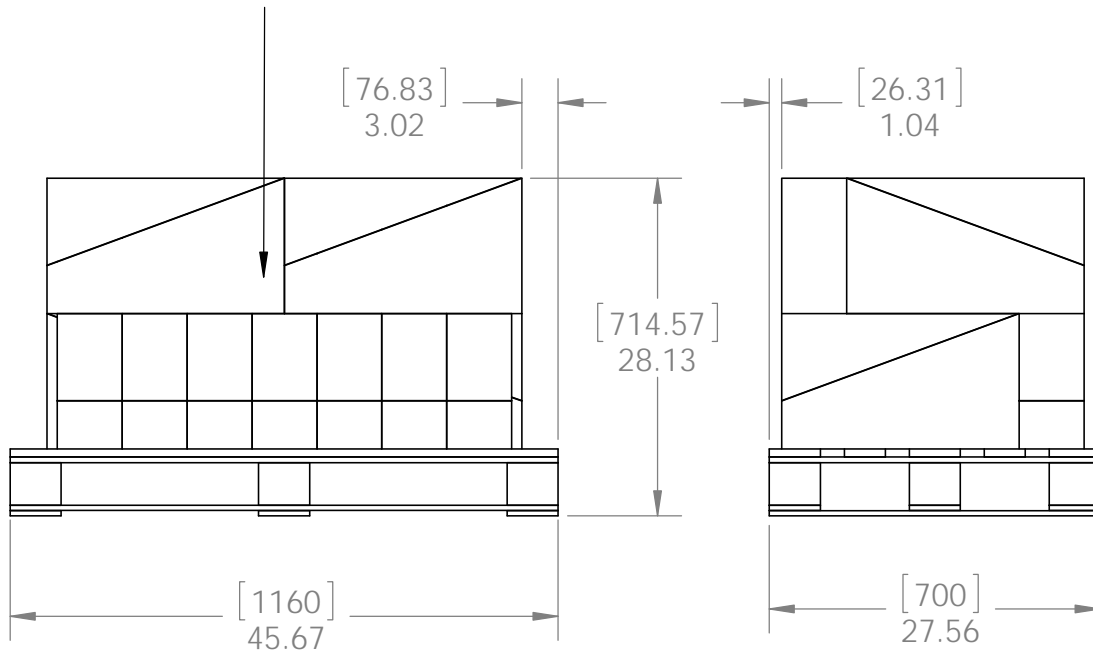
Item #: Case packing



Weight: 11.35 LBS
Scale: 1:4
Last updated: 7/13/2015

56621-10

Item #: **56621** | **HCN**
 Hex Cap Nut
PALLET 216 pcs
 SKU#: **56821**
 Weight: 244 lbs
 LOT# Priority#



additional pallet packing instructions

- plywood on top layer
- strap to pallet
- clear wrap around boxes

Weight: 216 LBS
 Scale: 1:16
 Last updated: 7/13/2015