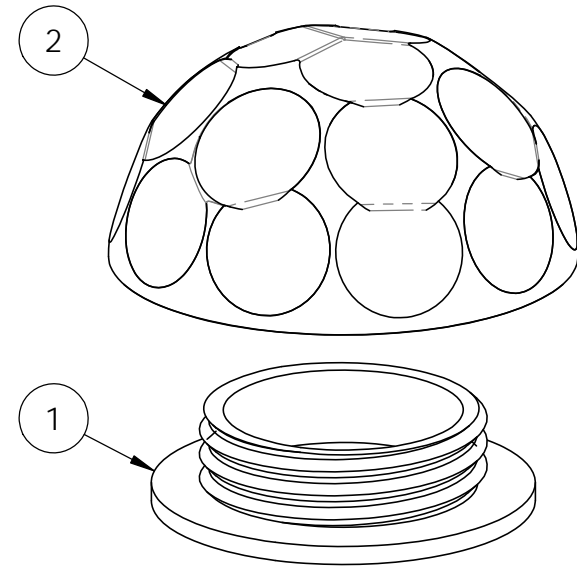
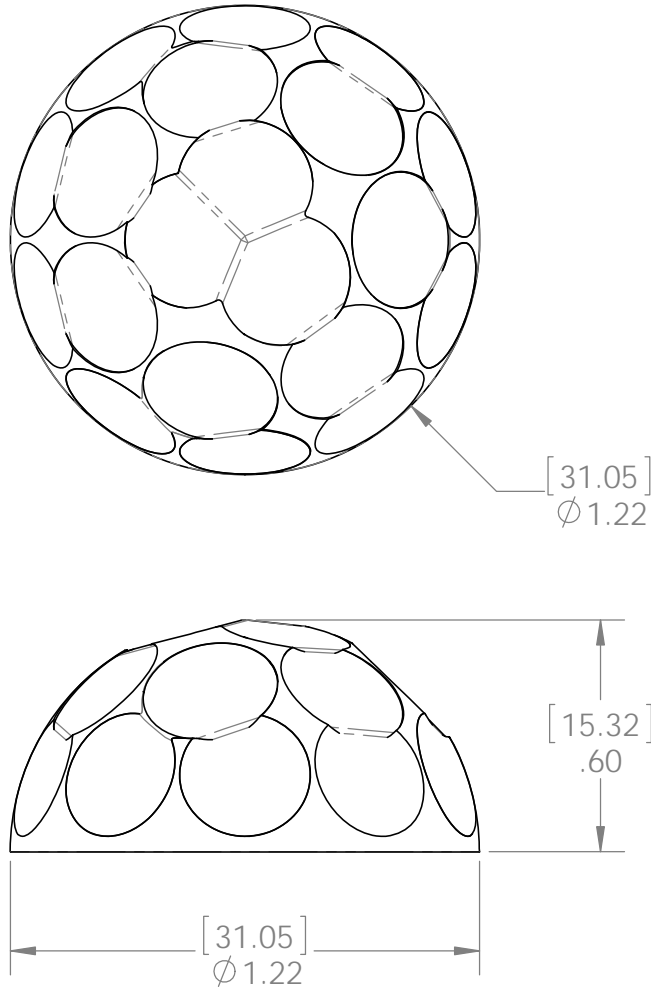


Product & Packaging Specs

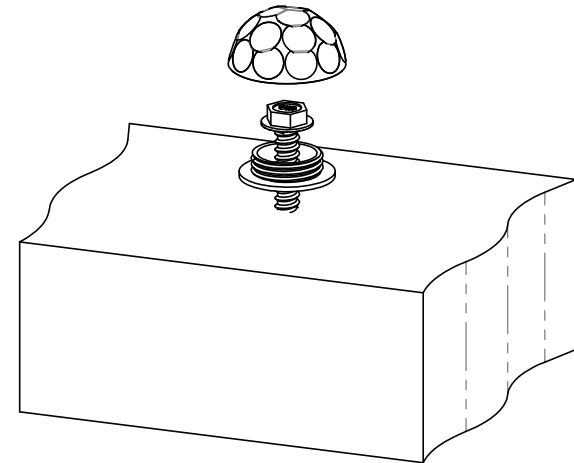
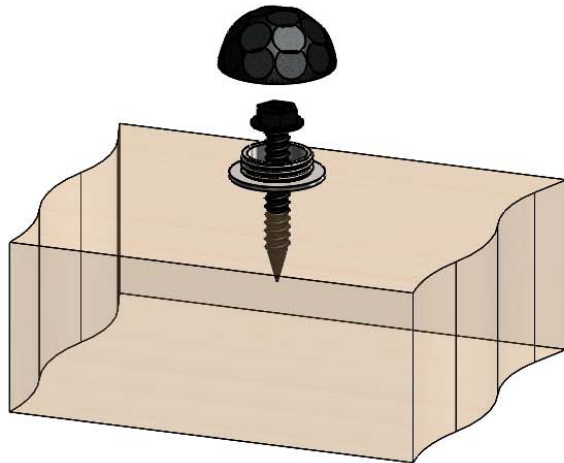
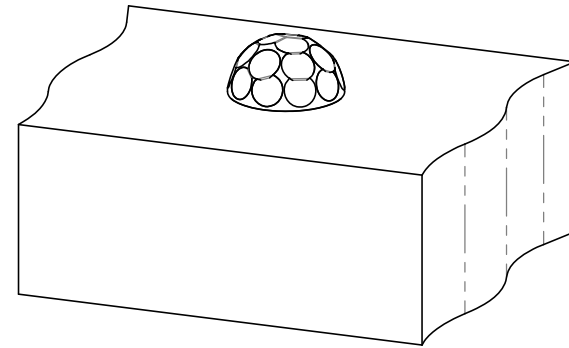
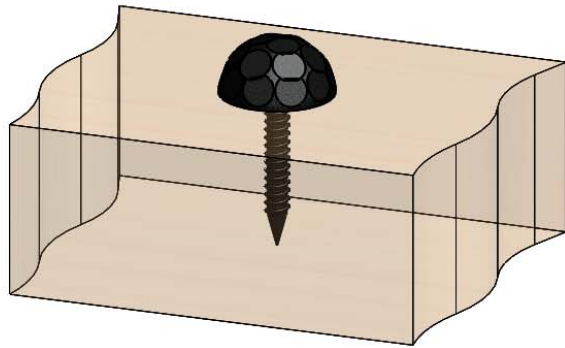
1-1/4" Hammered Dome Cap Nut

Item #: 56622

ITEM NO.	QTY.	PART NUMBER	DESCRIPTION
1	1	56622-12	Base, 1-1/4" Hammered Dome Cap Nut
2	1	56622-11	Nut, 1-1/4" Hammered Dome Cap



Weight: 1.28 LBS
 Scale: 2:1
 Last updated: 7/13/2015



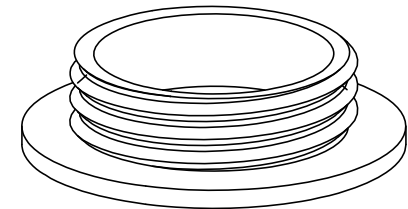
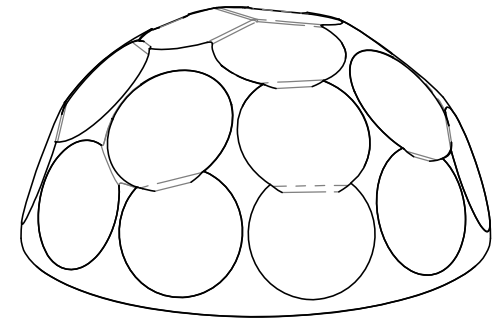
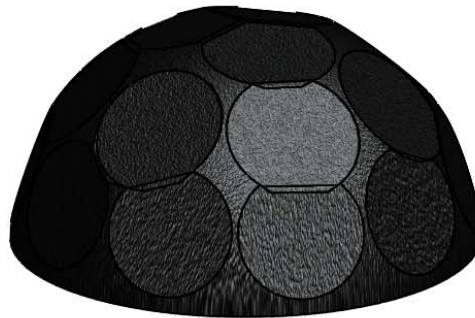
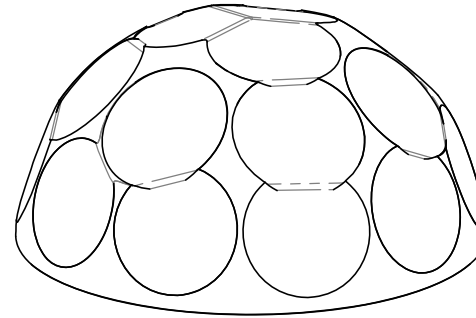
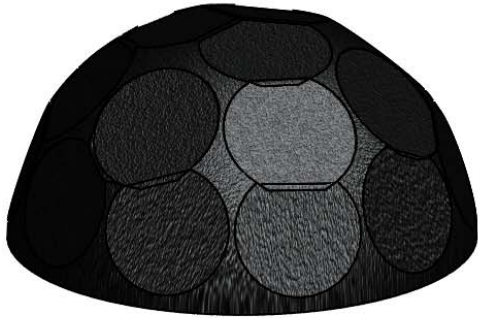
Weight: 1.28 LBS
Scale: 2:1
Last updated: 7/13/2015

56622-10

Product & Packaging Specs

1-1/4" Hammered Dome Cap Nut

Item #: 56622



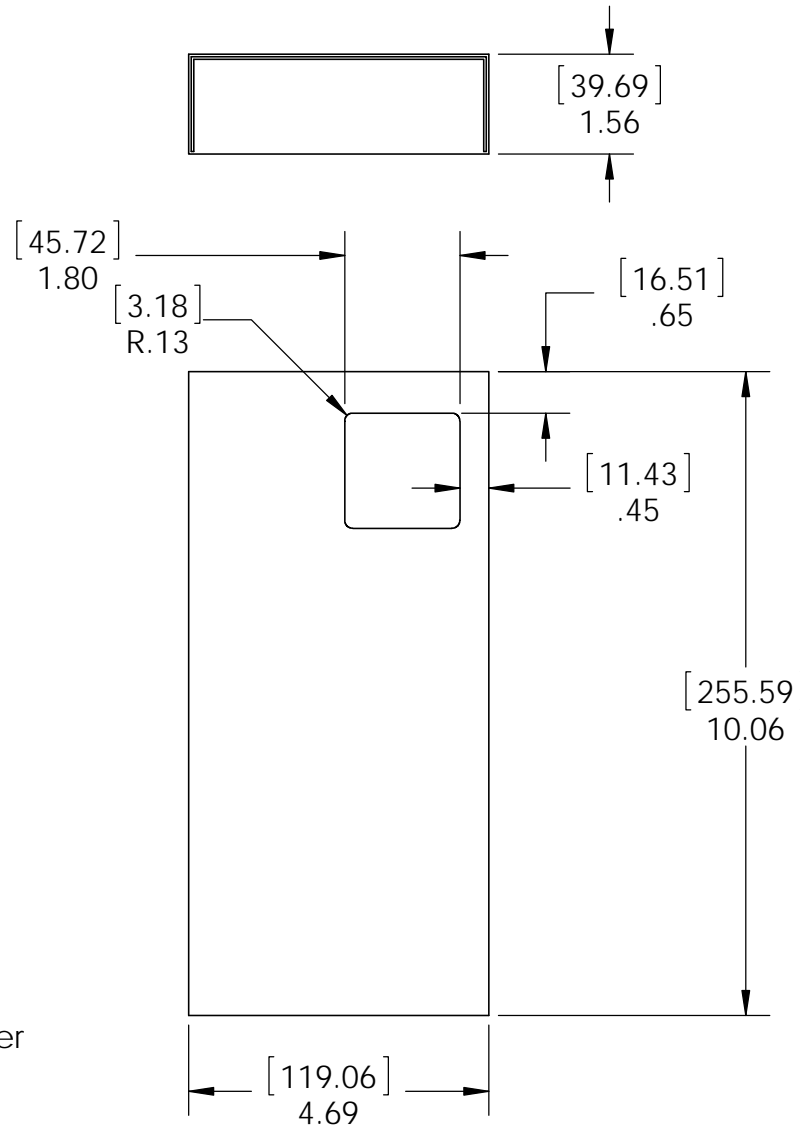
Weight: 1.28 LBS
Scale: 2:1
Last updated: 7/13/2015

56622-10

Product & Packaging Specs

Box, DCN

Item #: Box



Material: Corrugated Paper
 Finish:
 Weight: 0.03 LBS
 Scale: 1:3
 Last updated: 7/13/2015

56622-10



OZCO BUILDING PRODUCTS

Product & Packaging Specs

56622 Packing

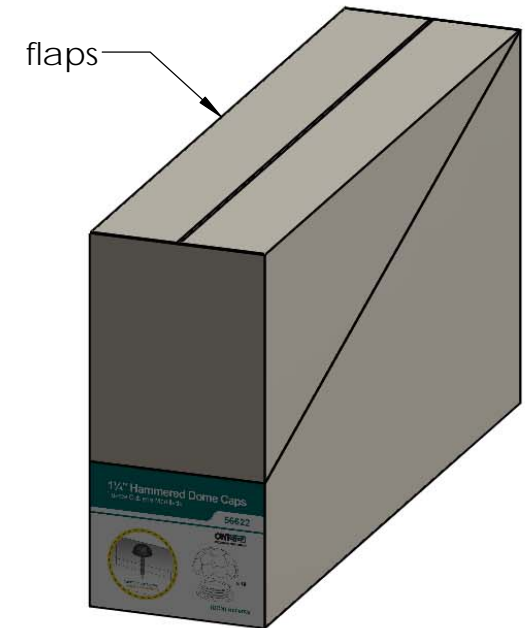
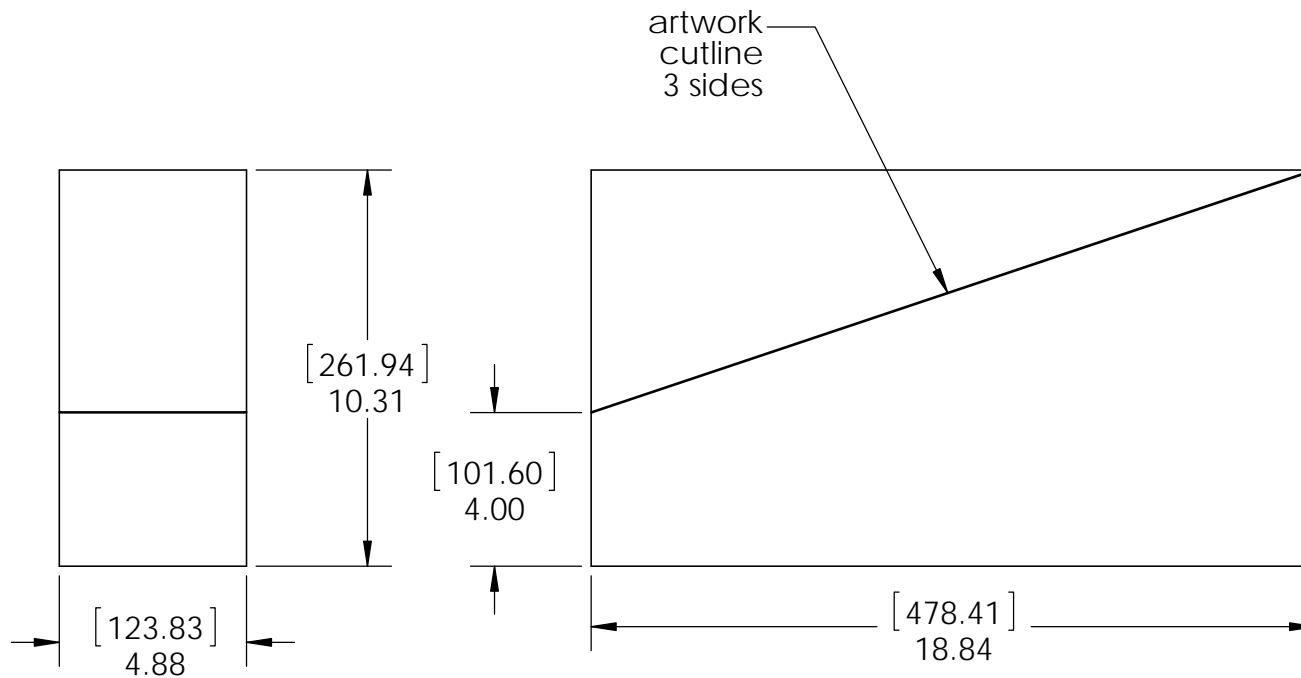
Item #: Box packing



ITEM NO.	QTY.	PART NUMBER	DESCRIPTION
1	10	56622	1-1/4" Hammered Dome Cap Nut
2	1	Box, 56622	Box, DCN
3	1	Insert, DCN	Insert, DCN Box

Weight: 0.73 LBS
 Scale: 1:2
 Last updated: 7/13/2015

56622-10



Material: Corrugated Paper
Finish: See artwork
Weight: 0.15 LBS
Scale: 1:5
Last updated: 7/13/2015

Product & Packaging Specs

56622 Packing

Item #: Case packing



Weight: 14.4 LBS
 Scale: 1:3
 Last updated: 7/13/2015

56622-10



OZCO BUILDING PRODUCTS

Product & Packaging Specs

56622 Packing

Item #: Pallet packing

Item #: **56622** | **HDCN**

Hammered Dome Cap Nut

PALLET | **240 pcs**

SKU#: 56822

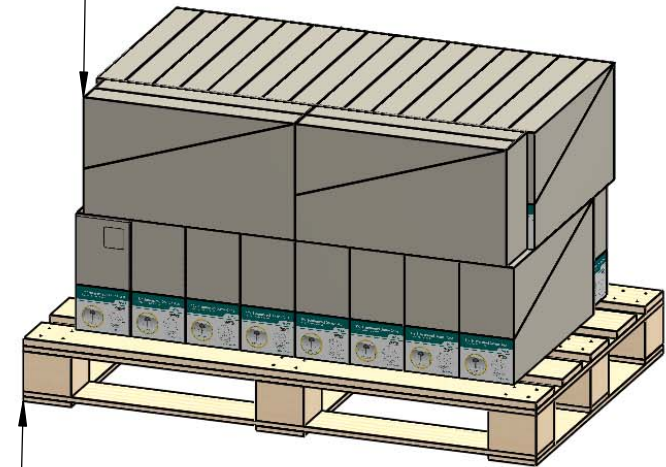


Weight: 161 lbs

LOT# _____ Priority# _____



Total number of cases: 20
Total number of pieces:
20X12=240 pieces on pallet

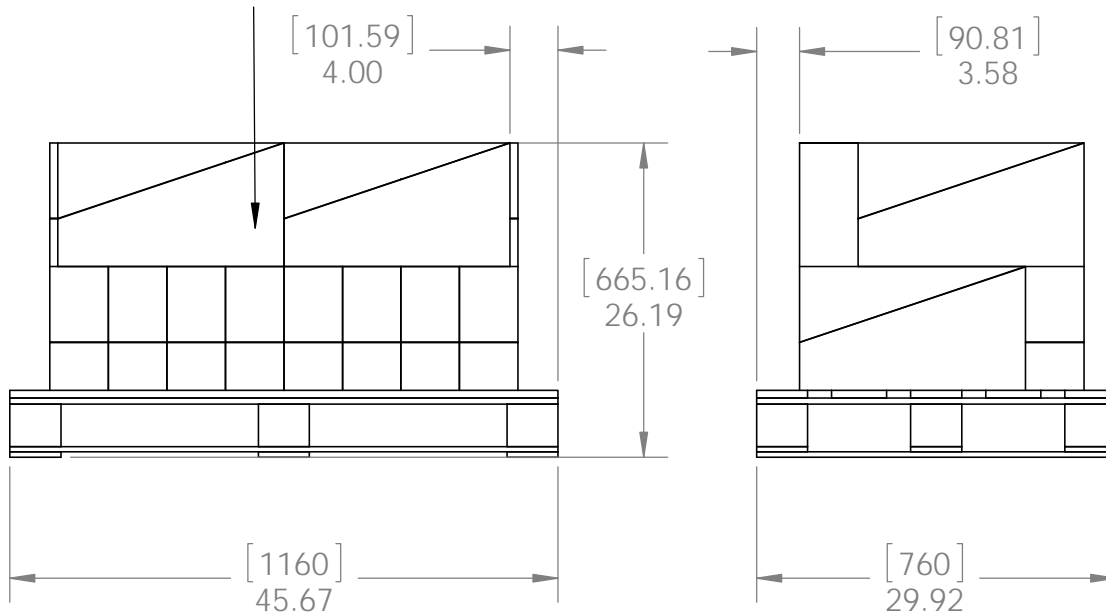


A pallet



additional pallet packing instructions

- plywood on top layer
- strap to pallet
- clear wrap around boxes



Weight: 161 LBS
Scale: 1:2
Last updated: 7/13/2015

56622-10