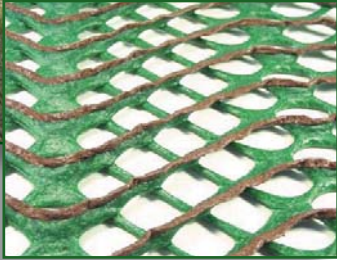


GP-Flex[®] TENAX

•1800g - Suitable for occasional use of heavy weight vehicles, access routes for fire engines and refuse trucks (up to 8 tons/axle)

GP-Flex[®] is the new generation grass protection mesh. While the previous TENAX grass protection mesh proved to be one of the most robust and reliable solutions in the world for protecting grassed areas from pedestrian and vehicle damage, we identified a need for developing these products further to include an improved element of slip resistance and flexibility, the result being GP-Flex[®]!

GP-Flex[®] has been tested for slip resistance to BS 7976-2 and when tested alongside other slip resistant grass protection meshes, GP-Flex[®] showed an improvement of over 33% in comparison. GP-Flex[®] is manufactured using a unique method of extrusion (patent pending), enabling us to incorporate a slip resistant surface and by re-designing the profile, we have made the mesh more flexible enabling quicker installation.



GP FLEX

Product Code	Color	Roll Size	Weight Per Roll
1A090295		6.7 ft x 65.0 ft	159 lbs

TURF REINFORCEMENT MESH

Product Code	Color	Roll Size	Weight Per Roll
61620308		6.7 ft x 100 ft	88 lbs

YARD PROTECTION

Product Code	Color	Track Size	Weight Per Track
64313308YP		3.35' x 20'	9.7 lbs

TRACKWAY

Product Code	Color	Panel Size	Weight Per Panel
1A060275		4.0' x 6.7'	22 lbs



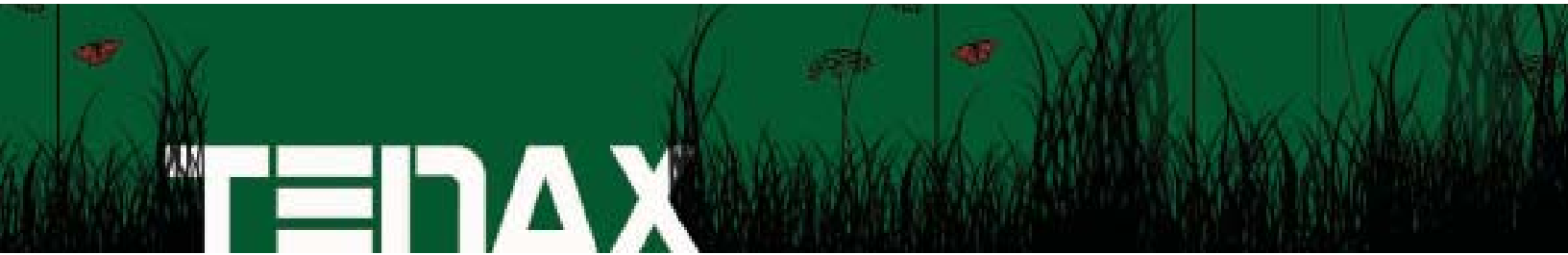
METAL FIXING PINS

Product Code	Color	Quantity Per Case	Size
2A060016		500	8" x 1" x 8"

PARKING MARKERS

Product Code	Color	Quantity Per Case
3A032242		100

Case Histories are available upon request.



GROUND PROTECTION SOLUTIONS



Welcome to the Possibilities. Welcome to Tenax.

(P) 1-800-356-8495
(F) 1-877-836-2987
www.tenaxus.com

TURF REINFORCEMENT



Ideal Uses:

- Over-Flow Parking
- Footpaths
- RV Parks
- Golf Cart Paths
- Residential Parking for cars, boats & RVs
- Farmyard vehicles
- Auxiliary parking areas for concerts, fairs & festivals

Tenax's Turf Reinforcement (TR) is a green extruded mesh used to reinforce grassed areas where vehicles & pedestrian pass. This "Go Green" product is natural looking, cost effective, & easy to install. It also helps to reduce stormwater run off which is a common concern with traditional asphalt & concrete. Once installed, TR provides a very stable surface suitable to support cars, lightweight trucks & pedestrians. TR protects against ruts commonly caused by vehicles & helps to reinforce the root system. For optimal results, install in the spring.

YARD PROTECTION



Ideal Uses:

- Temporary parking for cars, RVs, boats, etc. on grassed areas
- Use to drive on your grass
- Preserve grass growth and roots
- Prevent wheels from rutting in grassed areas

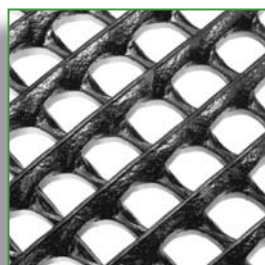
TENAX Yard Protection is a high density polyethylene mesh designed for protecting and reinforcing grassed areas to be used by lightweight vehicles. Once established, TENAX Yard Protection will protect the grass roots from damage and help prevent wheel rutting. Due to its unique design, TENAX Yard Protection proves to be extremely flexible and provides a visually pleasant and stable surface structure through which grass can be grown.

TRACKWAY



Ideal Uses:

- Temporary access for construction vehicles over grass or asphalt
- Reinforcement for overflow car, motor home & boat parking
- Temporary roadways



Manufactured from high density polyethylene, this thermoplastic extruded mesh panel is extra thick to support heavy weights and has a high profile providing extra grip for both wheeled and tracked vehicles. UV stabilized and unaffected by chemicals, Trackway can be re-used many times over providing long lasting protection.

Supplied in black panels measuring 4' x 6.7', TENAX Trackway weighs less than 22 pounds yet each panel will support vehicles up to 20 tons. Simply laid down and joined with either fixing pins or cable ties, Trackway can either be used for temporary protection or if left in position the grass will grow through the mesh providing a stable and green environment.